



# The Norfolk Area SHOPPER



**CIRCULATION VERIFICATION COUNCIL**  
**MECP**  
 Established In 1988  
 Serving Northeast Nebraska...  
 Boxholder Local or Rural  
 VOID WHEN DELIVERED BY ANY OTHER METHOD  
 Postal Patron

**ECRWSS**  
 Presorted Standard  
 US Postage Paid  
 Permit No 57  
 Norfolk, NE 68701

## Year End SAVINGS!

Instant \$3,000 Rebate  
 on New 2025 E-Z-GO  
 Liberty ELITE Cars  
 Four Forward-Facing Seats • Only 2 Left!  
 Great for campgrounds, golfing or  
 driving around town!!  
 Rebate Good Until December 31, 2025  
 Buy a NEW 2025 E-Z-GO Gas Golf Car & Receive  
 \$500 Free Accessories  
 Large Color Selection



**MR. Golf Car Inc.**  
 405-369-2625  
 Springfield, SD

Hours: Mon-Fri 8am - 5pm  
 822 8th Street, Springfield, SD  
 605-369-2625 - www.mrgolfcar.net

**Order Prime Rib now  
 for Christmas and New  
 Years**  
 Gift Certificates  
 available any  
 denomination....the  
 perfect gift for anyone  
 on your list

## PIERCE LOCKER

117 N Brown St, Pierce, NE • 402-329-4365

Let us Help You Make  
 Your Dreams Come True!

Check out our  
 lakeside models

**ON SALE NOW!**

Call me and let's  
 get your feet on  
 those floors

**308-237-3843**

**Iseman  
 HOMES**  
 YOUR HOME SOLUTION.



## Land Sales & Auctions!



**Ben Frisch**  
 Land Agent  
 402-649-7030

benfrisch@AmericanLegacyLandCo.com



**Hunter Frisch**  
 Land Agent  
 402-649-9097

hunterfrisch@AmericanLegacyLandCo.com



**Robbie Frisch**  
 Land Agent  
 402-741-2964

robbie@AmericanLegacyLandCo.com

### WHAT WE OFFER:

- Traditional listings
- Expansive market distribution
- Top tier professional video/photography
- Auctions
- A team of committed, knowledgeable agents
- Consultants to assist with property improvements

**COMMITTED. DETERMINED. TRUSTED**

**AMERICAN  
 LEGACY  
 LAND CO.**

AmericanLegacyLandCo.com

## Gift Card Special

Now Until December 31<sup>st</sup>

For Every  
**\$50** Spent on  
 Giftcards  
 Receive A  
**\$10** Gift  
 Certificate

Use it toward anything in the store—from brand-new  
 drum sets to guitars—or grab one as the perfect  
 stocking stuffer!

### NEW OWNERSHIP

Come in during our business hours  
 and ask about taking one of our  
 many private lessons we offer for:  
 Guitar, Piano, Drums, Ukulele,  
 Bass, or Voice!

**We Also Have Available**  
 Adult group guitar class &  
 snare drum fundamentals class



### Store Hours

Mon.	10 am to 7 pm
Tues.	10 am to 7 pm
Wed.	10 am to 7 pm
Thur.	10 am to 7 pm
Fri.	10 am to 5 pm
Sat.	10 am to 5 pm
Sun.	Closed

~Music is the gift that lasts a lifetime~

311 W. Norfolk Ave. Suite 110 Norfolk, NE

**402-379-5252**

www.midwestmusiccenter.net







## MISCELLANEOUS

Become a published author. We want to read your book! Dorrance Publishing trusted since 1920. Consultation, production, promotion & distribution. Call for free author's guide 1-877-729-4998 or visit [dorranceinfo.com/ads](http://dorranceinfo.com/ads)

Consumer Cellular - same reliable, nationwide coverage as the largest carriers. No long-term contract, no hidden fees free activation. All plans feature unlimited talk & text, starting at just \$20/mo. Call 1-877-751-0866

Dental insurance - Physicians Mutual Insurance Company. Covers 400+ procedures. Real dental insurance - not a discount plan. Get your free Information Kit with details! 1-855-526-1060 [www.dental50plus.com/ads#6258](http://www.dental50plus.com/ads#6258)

DIRECTV Stream - Carries the most local MLB Games! Choice Package \$89.99/mo for 12 mos Stream on 20 devices at once. HBO Max included for 3 mos (w/Choice Package or higher.) No contract or hidden fees! Some restrictions apply. Call IVS 1-866-859-0405

Donate Your Car to Veterans Today! Help and Support our Veterans. Fast - FREE pick up. 100% tax deductible. Call 1-800-245-0398

Don't let the stairs limit your mobility! Discover the ideal solution for anyone who struggles on the stairs, is concerned about a fall or wants to regain access to their entire home. Call AmeriGlide today! 1-833-399-3595

Home break-ins take less than 60 seconds. Don't wait! Protect your family, your home, your assets now for as little as 70¢ /day! 1-833-890-1262

Inflation is at 40 year highs. Interest rates are way up. Credit cards. Medical bills. Car loans. Do you have \$10k or more in debt? Call National Debt Relief and find out how to pay off your debt for significantly less than what you owe! Free quote: Call 1-844-955-4930

Jacuzzi Bath Remodel can install a new, custom bath or shower in as little as one day. For a limited time, waving all installation costs! (Additional terms apply. Subject to change and vary by dealer. Offer ends 3/30/25) 1-844-501-3208

MobileHelp America's premier mobile medical alert system. Whether you're home or away. For safety & peace of mind. No long term contracts! Free brochure! Call 1-888-489-3936

No cleaning gutters guaranteed! LeafFilter - most advanced gutter protection, backed by a no-clog guarantee & lifetime warranty. 833-610-1936 to schedule free inspection & estimate. Get 20% off! Seniors/military save extra 10%. Restrictions apply, see rep for warranty & details

Peace of mind & early detection. Now more than ever, it's important to get screened for Stroke & Cardiovascular Disease risk. Life Line Screening is simple & painless. 833-970-4172

Pest control: Protect your home from pests safely. Roaches, Bed Bugs, Rodent, Termite, Spiders & more. Locally owned & affordable. For service or inspection today! 833-860-0657 Have zip code ready!

## MISCELLANEOUS

Portable Oxygen Concentrator May Be Covered by Medicare! Reclaim independence and mobility with the compact design and long-lasting battery of Inogen One. Free information kit! Call 877-305-1535

Prepare for power outages today with a Generac Home Standby Generator. Act now to receive a FREE 5-Year warranty with qualifying purchase\* Call 1-855-948-6176 today to schedule a free quote. It's not just a generator. It's a power move.

Professional lawn service: Fertilization, weed control, seeding, aeration & mosquito control. Free quote. Ask about first application special! 833-860-0811

Reach millions of homes nationwide with one easy, affordable buy in the ADS Network! For more information [www.communitypublishers.com/category/all-products](http://www.communitypublishers.com/category/all-products)

## MISCELLANEOUS

Replace your roof w/the best looking & longest lasting material steel from Erie Metal Roofs! 3 styles & multiple colors available. Guaranteed to last a lifetime! Limited Time Offer up to 50% off install + Additional 10% off install (military, health & 1st responders.) 1-833-370-1234

TOP DOLLAR PAID for old vintage guitars! Gibson, Fender, Martin, Greesch, Rickenbacker, Epiphone, Etc. 1930's to 1980's. Call 866-433-8277

## MISCELLANEOUS

Water damage cleanup & restoration: A small amount of water can lead to major damage and mold growth in your home. Our trusted professionals do complete repairs to protect your family and your home's value! Call 24/7: 1-833-887-0117. Have zip code of service location ready when you call!

We buy houses for cash as is! No repairs. No fuss. Any condition. Easy three step process: Call, get cash offer & get paid. Get your fair cash offer today by calling Liz Buys Houses: 1-844-877-5833

**Benson Land Tiling, Excavation & Dozer Work**

Shop **402-337-5354**  
Cell **605-760-2408**

**Dozer Work**  
•Tear Down Building Sites  
•Clear Ditches-Tree Lines

**FREE ESTIMATES**

Servicing Nebraska, South Dakota and Iowa

**Curt Benson**  
Randolph, NE  
[bensonlandtiling@gmail.com](mailto:bensonlandtiling@gmail.com) • [bensonlandtiling.com](http://bensonlandtiling.com)

We Make Your Wet Spots Dry

**OTT CONCRETE CONSTRUCTION**  
**402-694-6761**  
[www.ottconcrete.com](http://www.ottconcrete.com)

**OTT CONCRETE CONSTRUCTION PROVIDES TOTAL RESIDENTIAL AND COMMERCIAL CONCRETE CONTRACTING FOR CLIENTS IN CENTRAL AND WESTERN NEBRASKA.**

**Contact Us Today!**  
Free Estimates  
Over 25 Years of Experience!

Foundation Services • Footings & Walls  
Residential Concrete • Commercial Concrete  
Industrial Flatwork  
[kara@ottconcrete.com](mailto:kara@ottconcrete.com)

# The Fight Against COVID-19 Is Not Over

## Learn About COVID-19 Booster Studies at Velocity

Help stop the spread of COVID-19 - join a booster study at Velocity. Eligible participants may receive compensation for study-related time and travel. Health insurance is not required to join.

Learn more:  
Call (402) 371-0797

Visit [VelocityClinicalTrials.com](http://VelocityClinicalTrials.com)

**Velocity**  
CLINICAL RESEARCH

# Ho-Ho-Ho Your New Ride For The Snow!

**14 NEW FORD F-150 CREW CAB**

4x4, On Hand  
**Moody Price** \*0% for 60 M  
STK A72890 **\*4.9% for 84 M**

**'24 FORD F-150 CREW CAB LARIAT**

4x4  
**Moody Price** STK A01391 **\$56,995**

**'24 FORD BRONCO BLACK DIAMOND**

4 dr., Leather, Sasquatch Pkg., Loaded  
**Moody Price** STK A86424 **\$46,995**

**'24 CHEVY SILVERADO REG CAB**

Short Box, 4x4  
**Moody Price** STK 127656 **\$38,995**

**'24 FORD EDGE ST-LINE AWD**

**Moody Price** STK A02513 **\$32,995**

**'24 FORD EDGE SEL AWD**

Leather  
**Moody Price** STK A12969 **\$31,995**

**23 JEEP GLADIATOR MOJAVE**

6,000 miles, Loaded  
**Moody Price** STK 582330 **\$44,995**

**'23 FORD EXPLORER XLT**

Leather, Loaded  
**Moody Price** STK A06199 **\$37,995**

**'21 FORD F-250 CREW CAB**

4x4, Platinum Pkg., Diesel  
**Moody Price** STK C66962 **\$57,995**

**'21 FORD F-150 CREW CAB LARIAT**

4x4  
**Moody Price** STK B21897 **\$31,995**

**'20 FORD F-150 CREW CAB XLT**

4x4  
**Moody Price** STK D57731 **\$26,995**

**'20 LINCOLN NAUTILUS RESERVE**

AWD  
**Moody Price** STK L10488 **\$22,995**

**'19 HYUNDAI ELANTRA**

**Moody Price** STK 770044 **\$15,995**

**'16 FORD F-150 CREW CAB XLT**

4x4  
**Moody Price** STK G00264 **\$19,995**

**'16 FORD F-150 CREW CAB XLT**

4x4  
**Moody Price** STK F98439 **\$15,995**

# MOODY

## MOTOR

[www.moodymotor.com](http://www.moodymotor.com) • 1-800-745-5650

MATT MOODY

ALAN KEMP

HOLT ROBINETTE  
Finance Manager

**Open 6 Days A Week**

**HOURS**  
Monday thru Friday  
8:00 a.m. - 5:30 p.m.  
**Saturday:**  
8:00 a.m. - 2:00 p.m.  
**Sunday:**  
Closed



# RN's • LPN's

**\$\$ Sign On Bonus \$\$**

**Competitive Wages  
All Shifts  
Full Benefits**



**Sandhills  
Care Center**

Contact  
Penny Jacobs, Administrator at  
**402-387-1294** or  
admin@sandhillscarecenter.com  
143 S Fullerton St., Ainsworth, NE

# NOW HIRING



INDUSTRIES, INC.

Apply in Person

1000 Industrial Parkway, Madison NE  
402-454-3394

## SHAG DRIVER

### FULL TIME

**Self Motivated Responsible  
Great Benefits**

## JOIN OUR STAFF

And Bring A Difference  
To Someone's Life

# CNA

All Shifts

Park View Haven Care Center  
309 North Madison,  
Coleridge, NE  
402-283-4224

**Norfolk Veterans Home has  
an exciting opportunity for**

**Full-Time  
Custodian/  
Housekeeper**



**7:00 am  
to  
3:30 pm**

**For Job Details And To Apply,  
visit <https://veterans.nebraska.gov/employment-ndva>**

**NORFOLK VETERANS' HOME**  
"CARING FOR AMERICA'S HEROES"

**600 E. BENJAMIN AVENUE  
NORFOLK, NE. 68701  
402-370-3141**

## Hiland Dairy Foods has an opening for a Maintenance Mechanic

We're looking for someone with basic,  
general maintenance knowledge.

**Applicant Must Have:**

- The basic electrical knowledge & ability to rewire & change electric motors
- Knowledge of hydraulics & pneumatics in regard to the operation of packaging equipment
- Ability to do light welding
- The ability to lift up to 70 pounds

Food production machinery experience  
preferred or will train.

**Please fill out an application on our website:**  
[hilanddairy.com/careers/](http://hilanddairy.com/careers/)



Hiland Dairy Foods is  
an Equal Opportunity  
Employer offering  
competitive wages and  
full benefit package.

## MISCELLANEOUS

Wesley Financial Group, LLC  
Timeshare Cancellation  
Experts Over \$50,000,000 in  
timeshare debt & fees can-  
celled in 2019. Get free info  
package & learn how to get  
rid of your timeshare! Free  
consultations. Over 450  
positive reviews. 833  
-308-1971

## SERVICES

CJP Construction, services  
offered: decks, general re-  
pairs, landscaping, mowing,  
painting, roofing, sheds, sid-  
ing, & snow removal. Call  
Cody at 402-992-4139

Looking for Land! Whether  
buying or selling, I would like  
to talk with you. Brett  
605-660-6566

Tree trimming, removal and  
backyard stump removal. In-  
sured. Tree shearing  
available. Free estimates.  
Kerbel Tree Service. Call  
402-439-2979 or  
402-649-3856.

## NATIONAL NETWORK

AFFORDABLE TV & INTER-  
NET. If you are overpaying  
for your service, call now for  
a free quote and see how  
much you can save!  
1-866-472-7954. (mcn)

ATTENTION OXYGEN THER-  
APY USERS! Discover Oxy-  
gen Therapy That Moves with  
You with Inogen Portable  
Oxygen Concentrators. FREE  
information kit. Call  
1-833-650-5916. (mcn)

CASH PAID FOR HIGH-END  
MEN'S SPORT WATCHES!  
Rolex, Breitling, Omega,  
Patek Philippe, Heuer, Day-  
tona, GMT, Submariner and  
Speedmaster. Call  
1-833-641-6646. (mcn)

DENTAL INSURANCE from  
Physicians Mutual Insurance  
Company. Coverage for 350  
plus procedures. Real dental  
insurance- NOT just a dis-  
count plan. Do not wait! Call  
now! Get your FREE Dental  
Information Kit with all the  
details! 1-855-973-9175  
[www.dental50plus.com/](http://www.dental50plus.com/)  
[#6258 \(mcn\)](https://www.dental50plus.com/midwest)

**402-254-6261**

**NEBRASKA  
LAND TILING**

We have your Drainage Needs  
**COVERED**  
Over 20 years of Experience  
[www.NebraskaLandTiling.com](http://www.NebraskaLandTiling.com)

Serving the  
Tri-State Area

Less Water • More Savings • Healthy Fields!

**GPS  
Controlled  
& Mapped**



**December 10<sup>th</sup>, 2025**

## THERESA LANGE

**Thanks for all that you do!**

PICTURE PERFECT, NOW

WAIT UNTIL <<  
YOU TASTE IT

GET 8  
FREE  
BURGERS  
A \$22 value!

AMERICA'S ORIGINAL BUTCHER  
**OMAHA STEAKS**  
SINCE 1917

**Butcher's Classic Pack** **SAVE 57%**  
4 Butcher's Cut Filet Mignons (5 oz.)  
4 Air-Chilled Boneless Chicken Breasts (5 oz.)  
4 PureGround® Filet Mignon Burgers (6 oz.)  
4 Gourmet Jumbo Franks (3 oz.)  
4 Individual Scalloped Potatoes (3.8 oz.)  
4 Caramel Apple Tartlets (4 oz.)  
1 Omaha Steaks Seasoning (3 oz.)  
8 FREE Omaha Steaks Burgers (4 oz.)  
78237XDS separately \$999.99  
**SPECIAL INTRODUCTORY PRICE \$129.99**

**ORDER NOW!** [OmahaSteaks.com/ClassicPack7199](http://OmahaSteaks.com/ClassicPack7199) | 1.833.897.4133  
Ask for your FREE burgers with offer 78237XDS

Savings shown over suggested single item base price. 8 free 4 oz. burgers will be sent to each shipping address that includes 78237. Limit 2. Standard S&H added per address. While supplies last, items may be substituted due to inventory limitations. Some products may not be available for sale in your area. Sales are subject to OmahaSteaks.com/terms-of-use. Expires 12/31/25. 24M7165 | Omaha Steaks, LLC

# Benson Ag Sales

## MERIDIAN

**New Meridian  
Box & Bulk Tenders**  
*Rebates Offered  
Until December 31<sup>st</sup>*

## FRIESEN & MERIDIAN PARTS AND SERVICE

Randy • 402-741-1999

Derek • 402-741-2350

## Serve with Pride. Protect with Purpose.

## JOIN OUR TEAM AS A DEPUTY SHERIFF

### AND BUILD A CAREER THAT MATTERS.

*\*Starting at \$24/hr*

*\*Unlimited overtime available*

**Step up. Stand out. Make an impact.**

**Send resume to Boyd County Sheriff  
401 Thayer St, Butte NE or call 402-775-2331**

# OPEN POSITIONS

## Clinic Nurse (RN or LPN)

Part Time (Benefit Eligible)

## Surgical Services (RN or LPN)

Full Time

## Business Clerk

Full Time



**Antelope Memorial Hospital**

102 W 9th St., Neligh, NE

402-887-4151

*Healing Body, Mind and Spirit*

**This institution is an equal opportunity provider and employer**



## CARRIERS NEEDED

**Check Out Our HIRE-ON BONUS TODAY!**

- A-5:** South Norfolk Area: 700-1200 Blks S 5th Street, 400 Blks Bluff, 400-500 Blks Grove, Matrau, Michigan, Indiana, & Prairie Aves.
- A-9a:** Southeast Norfolk Area: 100-200 Blk E. Prairie Ave, 100 Blk E. Indiana, 100-200 Blk E. Michigan Ave, 900-1200 Blks Pierce Ave, 700-1200 Blks 1st Street (odd numbers only).
- A-14A:** Southeast Norfolk Area: 400 & 600-800 Blk E Grove, 900 S Birch, 700-900 Blks Logan, 800-900 Blks S Pine, Pasewalk Circle, 400-700 Blks E Pasewalk Ave, 500-600 E Bluff Ave.
- A-57:** Southwest Norfolk Area: 700-800 Blks 18th St, 18th Cir, & 20th St. 1800-1900 Blk Vicki Lane, 1800-2100 Blks Parker Circle. Mostly Apartment Deliveries On This Route.
- B-16:** Southeast Norfolk: 100-800 Blk S 1st (odd numbers) 200-400 Blk Blaine, E Phillip. 400-600 Blk Pierce St, 100-300 Blk E Park.
- C-35:** Northeast Norfolk Area: 100-200 Blk Cedar, Elm, Walnut, Maple, Spruce, Sycamore, Georgia, 600-900 Blk N 2nd, 600-1100 Blk N 1st.
- C-41:** Central Norfolk Area: 2300-2400 Blks Maple Ave, 600 Blk Summit St, 400-500 Blk Williams St, 2200-2400 Blks Hardison Dr, 600 Blk Charles St, Woodwind Apts, 2100-2300 Blks Prospect Ave, 2200 Blk Random Rd, 2200-2400 Blks W. Norfolk Ave, 100-600 Blks N. 25th Street, 100-300 Blks Valley View Dr.
- D-42:** Central Norfolk Area: 1100-1200 Blks Wilson Ave, Grant Ave, Sq Turn Blvd., Colwell, N 9th St, N 11th St, 900-1200 Blks Georgia & E. Benjamin Ave.
- D-45:** North Norfolk, 1300-1900 blks Sheridan Dr, 1700 blk Hillview Dr, 1800 blk N 16th St, 1700-1900 blks College View Dr.
- D-45A:** North Norfolk Area: 1700-2000 Blks Alaska, 1800-1900 Blks Hillview Dr, N 17th St, N 18th St & N 19th St, 2000-2100 Blks Sheridan Dr.
- D-49:** North Norfolk: 1600-1800 Blk Skyline, 1700-1800 Blk Imperial Rd, 1500 Blk N 19th, 900-1000 Blk N 18th.
- D-50:** Northwest Norfolk Area: 2200-2300 Blks BelAir Rd, 2200-2300 Blks Skyline, Shorthorn, Campbell, Lodgeview, & Bel Ridge.
- D-66:** Northwest Norfolk Area: 1700-2000 Blk Elmer's Lane, 1500-1600 Blks Hillview & Charolis, 1700 Blk McDonald & Hillview, 200-2100 Blks College View.
- D-66A:** Northwest Norfolk Area: 2100 Blk Vernon, Clearfield, Highland Dr., & Fairview. 1500-1600 Blks Longhorn. 1500-1700 Blks of Homewood.

**Give us a call or stop by the Norfolk Area Shopper for more information.  
We'd love to make you part of our NAS team!**

**THE NORFOLK AREA  
SHOPPER**

402-379-4100  
406 W Norfolk Ave.



HUSKER AG IS CURRENTLY SEEKING APPLICATIONS FOR A

## MAINTENANCE TECHNICIAN FULL-TIME

• EXCELLENT BENEFITS PKG. • TRAINING PROVIDED

Benefits include: Paid vacation & holidays, 401(k) retirement plan, quarterly profit sharing, health insurance, long-term and short-term disability, group life insurance, dental & vision insurance and flex spending account for dependent care

If interested please submit a resume to or complete an application at:



**Husker Ag, LLC**  
54048 Hwy 20, Plainview, NE 68769  
(402) 582-4446  
or send a resume to  
meganb@huskerag.com

## NOW HIRING

### Full Time

- ★ Design Drafter
- ★ Engineer

**HIRE ON  
BONUS**



Benefits Include: Health, Dental, Life, Short & Long Term Disability, 401K with Company Match, Holiday Pay, Paid Time Off, Profit Sharing, Family Owned & Operated.

Interested? Call Bridgette Muller @ 605-369-6000 or stop in @ 1314 Walnut Street Springfield, SD or, apply on-line @ www.rush-co.com

HUSKER AG IS CURRENTLY SEEKING APPLICATIONS FOR

## FULL TIME PLANT OPERATOR POSITION

• EXCELLENT BENEFITS PKG. • TRAINING PROVIDED

Benefits include: Paid vacation & holidays, 401(k) retirement plan, quarterly profit sharing, health insurance, long-term and short-term disability, group life insurance, dental & vision insurance and flex spending account for dependent care

If interested please submit a resume to or complete an application at:



**Husker Ag, LLC**  
54048 Hwy 20, Plainview, NE 68769  
(402) 582-4446  
or send a resume to  
meganb@huskerag.com

## C.N.A. Opportunities At Norfolk Veterans Home!

Part-Time & Full-Time Available!

Wage Based On Experience

\$24.15 - \$31.22/hr (\$3 Differential Included)

For Job Details And To Apply,  
visit <https://veterans.nebraska.gov/employment-ndva>



**NORFOLK VETERANS' HOME**  
"CARING FOR AMERICA'S HEROES"  
600 E. BENJAMIN AVENUE NORFOLK, NE.  
402-370-3141



## WE ARE HIRING

### PLANT OPERATOR

PAID TIME OFF - INSURANCE  
RETIREMENT PLANS



IF YOU ARE INTERESTED IN JOINING OUR  
TEAM AT THE ATKINSON ETHANOL PLANT

STOP IN AND APPLY IN PERSON  
at 87590 Hillcrest Rd, Atkinson  
ask for an application  
or send a resume to  
meganb@huskerag.com

# HIRING

NORFOLK VETERANS' HOME IS SEEKING

## Full Time Maintenance Specialist

to join our dynamic team!

Hours: 2:30-11PM



For Job Details And To Apply,  
visit <https://veterans.nebraska.gov/employment-ndva>



**NORFOLK VETERANS' HOME**  
"CARING FOR AMERICA'S HEROES"  
600 E. BENJAMIN AVENUE NORFOLK, NE.  
402-370-3141



## HELP WANTED Dietary Cook/Aide

Full Time Evening

12:30 - 9:00pm

Full Time Days

6am - 2pm



Full time Benefits: Health Insurance, Life Insurance, Matching Retirement, PTO

Competitive Wages

City Owned 30 Miles North of Norfolk



**PLAINVIEW MANOR**  
& WHISPERING PINES ASSISTED LIVING

101 W. HARPER AVE., PO BOX 219, PLAINVIEW, NE (402) 582-3849



## NOW HIRING! MAINTENANCE TECHNICIAN

\$3,000 New Hire Incentive!

JOB TRAINING PROVIDED!

PAID TIME OFF - INSURANCE  
RETIREMENT PLANS

IF YOU ARE INTERESTED IN JOINING OUR  
TEAM AT THE ATKINSON ETHANOL PLANT

STOP IN AND APPLY IN PERSON  
at 87590 Hillcrest Rd, Atkinson  
ask for an application  
or send a resume to  
meganb@huskerag.com

## First in food.

**MICHAEL  
FOODS** INC.

BENEFITS  
ADVANCEMENT  
GREAT PAY



### Feed Mill Tech/ CDL Driver

- Home Every Night (Local Route)
- Set Schedule
- Great Benefits!

Looking for a Feed Mill Tech/Class A CDL Driver to  
haul feed to local Michael Foods Farms.

**APPLY TODAY!**

[WWW.MICHAELFOODS.COM](http://WWW.MICHAELFOODS.COM)



Are you looking for a company  
that provides you stability and  
support for long term career  
growth? Provides excellent  
benefits? Recognizes employees?

Come See for Yourself At:

Michael Foods  
105 N Main Street \* Wakefield, NE  
402.287.5000

EOE: M/F/V/D





# 40th Annual **NEN** BASKETBALL TOURNAMENT

**FEBRUARY 21 & 22**

ONE-DAY TOURNAMENT, PLAY EITHER SATURDAY OR SUNDAY

BOYS & GIRLS, GRADES 4-8  
\$150/TEAM

Registration form found at [norfolkymca.org](http://norfolkymca.org)  
First 100 teams are guaranteed a spot!

**NORFOLK FAMILY YMCA**  
301 W Benjamin Ave.  
402-371-9770  
[sports@norfolkymca.org](mailto:sports@norfolkymca.org)

# MERRY Christmas AND HAPPY NEW YEAR



## ATTENTION LANDOWNERS:

Acquired agricultural land in the  
past 15 years? You may qualify for  
a huge tax deduction!

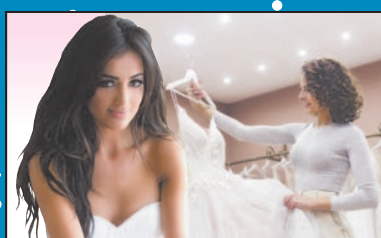
*Nebraska landowners average \$1,850 per acre!*



Call or Text **Ben Frisch** 402-649-7030 to see how much you could save

**BOA SAFRA AG**

Harvest Hidden Tax Deductions  
[boasafraag.com/p/benjamin-frisch-3wr](http://boasafraag.com/p/benjamin-frisch-3wr)



**Just got engaged ???  
Lets get started!!!**

Come in & see us for your  
• Wedding dress  
• Bridesmaid dress  
• Flower girl dresses



**Stitches  
By Kim**

402-370-0174

123 4th Street, Norfolk, NE  
Enter at backside of building connecting point.

Mon & Tues 9-6, Thurs 9-4:30, Fri 9-Noon

**LOWER ELKHORN**  
Natural Resources District

## Giving the Gift of Trees for Christmas!

**Shelter Your Loved Ones with  
A Shelter Belt.**

Order specific trees in bundles of 25 or consider a small  
acreage package of a variety of shrubs, bushes and trees.

**Order Your Trees & Shrubs For Spring!**

• Windbreaks • Living Snow Fences  
• Livestock Protection



1508 Square Turn, Blvd., Norfolk, NE  
402-371-7313 • [www.lenrd.org](http://www.lenrd.org)