

**CARRIERS  
NEEDED!**  
Check Out Our  
HIRE-ON BONUS  
TODAY!

# The Norfolk Area SHOPPER

View Us  
Online!

SCAN ME



CIRCULATION  
VERIFICATION  
COUNCIL

MECP  
Midwest Free Community Papers

ECRWSS

Presorted Standard  
US Postage Paid  
Permit No 57  
Norfolk, NE 68701

Established In 1988  
Serving  
Northeast Nebraska...

Boxholder  
Local or Rural  
VOID WHEN DELIVERED  
BY ANY OTHER METHOD  
Postal Patron

406 West Norfolk Avenue, Norfolk, NE 68701. 1-800-418-4101 (402) 379-4100 norfolkareashopper.com | Wednesday, February 18, 2026 • Volume 1 • No. 07

GATEWAY  
GENETICS

# 14th Annual GATEWAY GENETICS BULL & FEMALE SALE MARCH 1<sup>ST</sup>, 2026 - 1 P.M. - PIERCE, NEBRASKA

*Offering*

60+ Angus, Simmental & Maine Influenced Bulls  
Registered & Commercial Open Heifers



**LOT 1 - GATEWAY JAMESON N006**

REG. 21473024 • 1/19/25 • ANGUS

sire. BASIN JAMESON 1076 • mgs. HF TIGER 5T



**LOT 3 - GTWY SWSN MR FAITHFUL 507**

REG. 21307891 • 2/11/25 • ANGUS

sire. 44 FAITHFUL 2764 • mgs. CHESTNUT STRUT



**LOT 35 - GATEWAY RIGHT NOW N300**

REG. 4633675 • 2/24/25 • PB SIMMENTAL

sire. MR SR 71 RIGHT NOW E1538 • mgs. W/C LOADED UP 1119Y



**LOT 40 - GTWY SWSN MR RECHARGE 27N**

REG. 4591136 • 1/10/25 • PB SIMMENTAL

sire. BRIDLE BIT RECHARGE K256 • mgs. SO REMEDY 7F



**LOT 65 - GTWY SWSN MISS LASS 551**

REG. 21402617 • 1/14/25 • ANGUS

sire. 44 FAITHFUL 2764 • mgs. CONNEALY SCOPE



**LOT 67 - GATEWAY MISS EXECUTIVE N020**

REG. 4639317 • 1/24/25 • 3/4 SM 1/4 AN

sire. NPC EXECUTIVE RIGHT E707 • mgs. JMG NIGHT WATCH 807H

CK

SALES  
MARKETING

*Sale Management By*  
**COLT KEFFER: 765-376-8784**  
colt@cksalesandmarketing.com

GATEWAY  
GENETICS

**KEVIN, LAURA, BRENNAL & BRYLIE BENES**

Kevin: 402-741-1419 Laura: 402-750-1860

WWW.GATEWAY-GENETICS.COM

CCI  
LIVE



Northeast Nebraska's #1

Support Our Local VFW



**Lenten Friday Fish Fry**

Feb. 20<sup>th</sup>, 27<sup>th</sup> & March 6<sup>th</sup> 2026

Baked Beans • Potatoes • Salad • Desserts  
Dine In or Carry out 5:00 pm - 7:30 pm  
Or Until Gone

STANTON COUNTY VFW POST# 3602

1106 Veterans Ave., Stanton, NE • 402-439-2113



OTT CONCRETE CONSTRUCTION

402-694-6761

www.ottconcrete.com


OTT CONCRETE CONSTRUCTION PROVIDES TOTAL RESIDENTIAL AND COMMERCIAL CONCRETE CONTRACTING FOR CLIENTS IN CENTRAL AND WESTERN NEBRASKA.

Contact Us Today!  
Free Estimates  
Over 25 Years of Experience!


Foundation Services • Footings & Walls  
Residential Concrete • Commercial Concrete  
Industrial Flatwork

kara@ottconcrete.com

# Cancer Benefit



Jamie Painter & Family



Silent Auction | Raffle | Chili Feed & Free Will Donations

February 21, 2026 | 3pm - 9pm

Hoskins Community Center

for more information, contact Nicky 402.922.1262

NEW E-Z-GO GAS OR ELECTRIC GOLF CARS!

Large color selection!  
Rebates on select models!



MR. Golf Car, Inc.

605-369-2625  
Springfield, SD

f

822 8th Street, Springfield, SD  
605-369-2625 - www.mrgolfcar.net

EZGO

Financing Available!

www.mrgolfcar.net  
Hours: M-F 8 a.m. to 5 p.m.

FORGOTTEN TREASURES

Public Sale/Spring Rendezvous

25 year Collection of recently unpacked boxes of antiques & collectibles

February 27 & 28, 2026  
Fri. 9 a.m. to 7 p.m. • Sat. 9 a.m.-?

GLASSWARE, POTTERY, CROCKS, PRIMITIVES, INDIAN ART, LAMPS, CARNIVAL GLASS, SWUNG VASES, AMBERINA, PICTURES, DEPRESSION GLASS



ELKHORN VALLEY MUSEUM

EVERY ITEM WILL BE SOLD!  
ALL OFFERS WILL BE CONSIDERED!

CASH ONLY

515 QUEEN CITY BLVD., NORFOLK, NE - FOR MORE INFO CALL 402-750-0717

FARM

Bale Hauling, \$6 per loaded mile. Clarks, NE; 402-705-9849

HAY & GRAIN

For Sale: Big round bales of Prairie hay, net wrapped, call Brock Olson 402-340-1454 or Russ Olson 402-340-0617.

LIVESTOCK

Huwaldt's Herefords  
BULLS FOR SALE  
Guaranteed Breeders!  
Performance Info;  
www.edhuwaldt.com  
Randolph, NE  
402-360-4387  
402-360-4796

MISCELLANEOUS

AGING ROOF? NEW HOME-OWNER? STORM DAMAGE? You need a local expert provider that proudly stands behind their work. Fast, free estimate. Financing available. Call 833-640-4753 Have zip code of property ready when calling!

MISCELLANEOUS

Bath & shower updates in as little as 1 day! Affordable prices - No payments for 18 months! Lifetime warranty & professional installs. Senior & military discounts available. 1-877-543-9189

MISCELLANEOUS

Become a published author. We want to read your book! Dorrance Publishing trusted since 1920. Consultation, production, promotion & distribution. Call for free author's guide 1-877-729-4998 or visit dorranceinfo.com/ads

MISCELLANEOUS

Consumer Cellular - same reliable, nationwide coverage as the largest carriers. No long-term contract, no hidden fees free activation. All plans feature unlimited talk & text, starting at just \$20/mo. Call 1-877-751-0866

MISCELLANEOUS

Dental insurance - Physicians Mutual Insurance Company.Covers 400+ procedures. Real dental insurance - not a discount plan. Get your free Information Kit with details! 1-855-526-1060 www.dental50plus.com/ads #6258

MISCELLANEOUS

DIRECTV Stream - Carries the most local MLB Games! Choice Package \$89.99/mo for 12 mos Stream on 20 devices at once. HBO Max included for 3 mos (w/Choice Package or higher.) No contract or hidden fees! Some restrictions apply. Call IVS 1-866-859-0405

MISCELLANEOUS

Inflation is at 40 year highs. Interest rates are way up. Credit cards. Medical bills. Car loans. Do you have \$10k or more in debt? Call National Debt Relief and find out how to pay off your debt for significantly less than what you owe! Free quote: Call 1-844-955 4930

MISCELLANEOUS

Jacuzzi Bath Remodel can install a new, custom bath or shower in as little as one day. Limited time, waving all installation costs! Additional terms apply. Subject to change and vary by dealer. Offer ends 1-844-501-3208

MISCELLANEOUS

MobileHelp America's premier mobile medical alert system. Whether you're home or away. For safety & peace of mind. No long term contracts! Free brochure! Call 1-888-489-3936

MISCELLANEOUS

Need cash quickly? We buy houses in any condition. Get a fair cash offer within 24 hours! Call today. Liz Buys Houses: 833-359-4707

MISCELLANEOUS

No more cleaning gutters. Guaranteed! LeafFilter backed by no-clog guarantee & lifetime warranty. Call 1-833-610-1936 to schedule

MISCELLANEOUS

FREE inspection/estimate. Get 15% off your entire order. Military & Seniors get additional 10% off. Limited time. Restrictions apply, see rep for details

## All Saints Annual Fish Fry

Friday, February 20<sup>th</sup>, 2026  
Snow Date: February 27<sup>th</sup>, 2026

Dine-in: 5:00 - 9:00pm

To Go Orders & Drive Thru behind Parish Center Starting at 4:30pm

at St. John's Parish Hall, Fordyce, NE

MENU: Fried Pollock, Potato Salad, Coleslaw, Baked Beans, Bun & Refreshments

Adults: \$15 Kids (6-12): \$7  
5 & Under FREE

Sponsored by: Wiebelhaus Trucking  
Tom 402-841-5625

## Antique Toy & Craft Show & Outdoor Swap Meet

Sunday, March 1, 2026

Open to the Public • 9am - 3pm

St Libory Catholic Church Parish Hall  
505 SPruce Street St. Libory, NE

Sponsored by:  
Central Nebraska Antique Tractor & Equipment Club

DOOR PRIZES - BUY - SELL - TRADE - LOOK

Hourly Drawing for Men, Women and Children

Concession Stand

Admission \$2 Per Person  
Children under 12 FREE with an Adult

For More Information, Contact  
Donna Dammann, Coordinator and Vendor Reservations; 308-258-1463  
St. Libory, NE  
Donna Wilton, CNATE Trasurer; 402-469-4455  
Hastings, NE

Donate Your Car to Veterans Today! Help and Support our Veterans. Fast - FREE pick up. 100% tax deductible. Call 1-800-245-0398

Don't let the stairs limit your mobility! Discover the ideal solution for anyone who struggles on the stairs, is concerned about a fall or wants to regain access to their entire home. Call AmeriGlide today! 1-833-399-3595

Home break-ins take less than 60 seconds. Don't wait! Protect your family, your home, your assets now for as little as 70¢ /day! 1-833-890-1262

## Thank You!

I would like to thank everyone that helped during and after my house fire December 1st. It was so scary! I'm so grateful for my neighbors, friends, and family. Special thanks to the Hoskins/Woodland Park Fire Dept. and Hoskins Rescue for their great care inside the ambulance; to the Carroll Fire Dept., Winside Fire Dept., to John & Karen Mangels, Rob Harmeier, Amy Paulson, Lois Bowers Family, Brian Bowers Ins., Tom & Kristie Granfield, Bonnie Geiger, Eldo & Diana Marquez, Wal-Mart & Lou's Thrifty-Way for boxes, Wetzel & Truex Jewelers for cleaning my jewelry, The Wash Tub for washing my clothes, Orphan Grain Train, & Bend the Trend Clothing Store for new clothes, Hoskins MFG. Co. for the cash donations at their Christmas Party. Also, thanks to all who came the day of the fire and got me some clothes, hugs, phone calls, & food. Thank you, Nikki, at Sound Decision for finding a charger for my hearing aids.

Special thanks to Jerry Kock and Karmon for letting me stay with you and to my family for all of your help & support. I don't know what I would do without all of you.

Hugs & Many Thanks  
Marcy Schellenberg



# Auction

CONTINUED ON PAGE 4

WEST POINT LIVESTOCK AUCTION

Thursday February 19 Wkly /Special Breds/Pairs  
Thursday February 26 Weekly /Special ACF


Thursday - 10:00 a.m. Fat Cattle /Weigh Cows/Bulls 12:30 Feeder/Bred Cows/PRs

Market Report: February 12, 2026

We had some good sets of fats in town for our Thursday February 12th auction, gathering a steady market from last week, sending those top fats out at 240.50. We followed with a large run of weigh cows and bulls also finding that market to look comparable to past weeks. We finished the afternoon with a short run of feeders and bred cows. We will be back on February 16th with another pre-condition auction, expecting 2000 head. We would also be happy to stop out and visit with you about our upcoming specials.

Weigh cows / Finish Cattle	277 HD
Drug Free	No Test
Top Fats	238-240.50
Choice /Select	232-238
2-way Cattle	245-260
Hol /Jer /LH	180-186
Top Cows	170-188
Bulk	162-170
Low Yield	50-162
Bulls	160-210
Young Feeding Cows	185-230

OFFICE 402-372-2493 • www.westpointlivestock.com  
Brian Brester (Mg): 402-750-5821



STOCKMEN'S LIVESTOCK INC.

PO Box 528  
1200 East Highway 50, Yankton, SD  
Office : 605-665-9641 • Fax: 605-665-9644  
www.stockmenslivestock.com

SALE SCHEDULE

Weigh Up Cows / Bull Sale  
Every Monday 8:30 am  
Fed Cattle  
Tuesday 7:30 am  
Followed by Weigh-Ups  
Feeder Cattle  
Wednesday 8:00 am  
Followed by Weigh-Ups  
Bred Cows & Pairs  
Friday 11:00 am (During Season)  
Special Feeder Sale  
As Announced

FIELD REPS

Greg Ryken (Owner) .....605-661-1451  
Dan Koupal .....605-491-1331  
Duane Haberman .....605-661-4282  
Ed Sage.....402-640-8420  
Brian Bjerkas.....605-661-5083  
Mark Herbolsheimer .....402-649-9061  
Doug Johnson.....402-394-1484  
Jerry Stoebner .....605-661-2404  
Steve Welch .....712-898-6519  
Dr. Tony Sees (Veterinarian).....605-760-9149



# IN-PERSON & ONLINE 2-DAY PUBLIC AUCTION

## DAY 1: FRIDAY, FEBRUARY 27, 2026 • 10:00 AM

**Auctioneer's Note: FRIDAY AUCTION TO START WITH HAYING, FEEDING, LIVESTOCK TRAILERS & HANDLING EQUIP, HAY & SALVAGE EQUIP, TRACTORS, COMBINES & MACHINERY TO FOLLOW!!**

### \* \* INTERNET LISTED ITEMS (12-NOON)



THE MOST TRUSTED MARKETPLACE FOR EQUIPMENT & TRUCKS.

### TRACTORS • SPRAYER (12-NOON)

- \*\*\*2016 JD 7290R MFWD diesel tractor. SN: 1RW7290RLEFD089014, 3388 hours, IVT (40K) trans w/left hand reverser, 4-SCV's w/power beyond, Green Star ready, 10" color touch display, 43 gpm hyd pump, 540/1000 PTO, cold weather pkg, quick tach, JD 700M loader w/grapple & elec joystick, front bracket & weights, rear pair 1400# & pair of 160# weights, 520/85R46 dual rubber 2nd-Owner
- \*\*\*2015 JD 6215R MFWD diesel tractor, SN: 12RW6215RVFD020701, 2310 hours, IVT (50K) trans w/left hand reverser, 4-SCV's w/power beyond, 10" color touch display, F/R roller blind, 540/1000 PTO, cold weather pkg, Auto Trac ready, rack & pinion axle, joy stick w/JD H380 8' bucket grapple loader, 2-450# rear wheel weights, 480/80R46 rear rubber 50%, 1-Owner
- \*\*\*2012 JD 8335R MFWD w/IS diesel tractor, SN: 1RW8335RECD064636, 1784 hours, IVT (42K) trans, 6-SCV's w/power beyond, 7" color display, 60 gpm hyd pump, cold weather pkg, radar, bracket & 20-suitcase weights, quick tach, rear wheel weights of 2-1400#/2-450#/2-165# & 480/80R50 dual rubber
- \*\*\*2001 JD 8410 MFWD diesel tractor, SN: RW8410P011175, 4656 hours, 16/4 PS trans, 4-SCV's, 42.5 gpm hyd pump, radar, 1000 PTO, 3 Pt, quick tach, Trimble auto steer, weight bracket & 20-suitcase weights, rear wheel 2-1500# weights, 18.4R/46 dual rubber, poor
- \*\*\*1993 JD 4760 MFWD diesel tractor, SN: RW4760P003744, 15/4 PS trans, 7244 hours, 3-SCV's, new cab kit, quick tach, rear wheel weights & 18-suitcase weights, 18.4R46 dual rubber
- \*\*\*1991 JD 4255 diesel tractor, SN: RW4255P006306, 15/4 PS trans, 7838 hours, 3-SCV's, new 520/85R rubber w/duals (Poor)
- \*\*\*1989 JD 4455 MFWD diesel tractor, SN: RW4455P002681, 9200 hours, 15/4 PS trans, 3-SCV's, cab interior average, w/JD 740 grapple loader, 8' bucket, 520/85R42 rubber (70%)
- \*\*\*1972 JD 4320 diesel tractor, SN: T613R021819R, Synchro trans, 7624 hours showing, 2-SCV's, 8-suitcase weights, ROPS, hyd pump noise, 18.4/38 rubber 30%,
- \*\*\*1970 JD 4020 diesel WF tractor, SN: 239843, Synchro trans, hours unknown, 3 Pt, 2-SCV's, ROPS, 5-slab weights & bracket, crease right front on hood, 18.4/34 rubber 85%,
- \*\*\*2008 JD 4730 diesel sprayer, 90' booms, 800-gal SS tank, 3318 hours, SN: 005648N04730X005648, 5-way section shut-off & 5-way nozzles, Green Star ready, 2x1 1/2 std pump w/single meter, SS educator, 2" fill, manual tread adjusts, markers, radar, auto air spring level system, Halogen lighting, 380/90R46 rubber & 38" floater rubber

### LIVESTOCK TRAILERS & HANDLING EQUIP

- 2013 Featherlite Perfect Fit 7.5" x 24' aluminum tandem axle stock trailer, VIN: 4FGB22421DC129342, (2) center gates & composite floor
- 1990 Titan 6'8" x 20' gooseneck tandem axle stock trailer, center gate, VIN: NET1106875, rough/No Title
- Titan West hyd squeeze chute, neck extension & rear hyd head lock, 220 V elec motor, nice
- (80) new 6-bar continuous fence panels

- (2) 3-panel circular tub
- Linn Wrangler hyd 11-panel corral w/solar panel less battery
- Filson 7" manual catch chute w/head gate & palpation alley
- Powder River manual calf chute

### ANTIQUE TRACTORS

- \*\*1949 JD B tractor, SN: 250378, NF, 3 Pt & PTO, 12.4/38 rubber 60%, good point & metal
- \*\*1951 JD A tractor, SN: 682679, NF, single hydraulic, 12.4/38 rubber 50%, average point & metal
- \*\*1952 JD G tractor, SN: 51891, WF, single hydraulic, good front rubber & 13.6/38 poor rubber, above average point & metal — Nice
- \*\*1952 JD G tractor, SN: 61957, NF, 13.6/38 poor rubber, average metal

### COMBINES • HEADERS • TRANSPORTS

- \*\*2013 JD S670 combine, SN: 1H05670SCD0756404, engine 2382 & separator 1575 hours, chopper, 3-Spd elec shift, premium Cab/Radio, auto trac ready, GS3 touch screen 7" color display, hi-torque variable speed driver, deep tooth chaffer, TriStream rato, 22.5' auger, dual front rubber 520/85R42, 480/70R30 rear rubber
- \*\*2007 JD 9760 STS Bullet Rotor combine, SN: 721303, engine 3302 & 2300 separator hours, Premier cab, contour master, Hi-torque variable speed, deluxe header control w/header height sensing, touch set concave adjust, round bar concave, general purpose chaffer, 22.5' auger, sidehill cleaning shoe pkg, chopper, 18.4R42 dual front & 18.4R26 rear rubber, several welds on frame
- \*\*2016 Mac Don FD75-S 30' draper header, SN: 304249 JD 630F 30' flex header 2012 & 2009 JD 608C Stalk Master 8-row 30" corn heads, 2012 above average condition and 2009 needs work
- JD 625 F 25' flex header, salvage
- JD 853A row crop head
- Dose Head Hunter Classic dolly single axle 30' transport trailer, SN: 82611
- EZ Trail 4-wheel header transport trailer, 2.5/8.0/10 rubber
- Texas Industries 425 dolly hitch transport trailer
- 4-wheel 22' corn head transport trailer
- Move Master 4-wheel header transport trailer, 12" rubber

### MACHINERY

- \*\*2014 Kuhn Krause 8000 30' Excelerator, SN: 8000-303806
- \*\*2013 JD 1770NT CCS 16-row 30" planter, SN:1A01770PCDM750854, liquid fertilizer & bulk fill, section control, Seedstar variable hyd drive, active pneumatic down force, predrive w/row command
- \*\*Blue Jet Sub Tiller-4 3 Pt 7-shank ripper, SN: 017085
- \*\*Dalton NH3 DW6035 applicator, SN: 12908, 15-shank, Raven AccuFlow unit, 400-gal tank
- \*\*Landoll 2320 13' Weather Proofer 2
- \*\*Great Plains 8328 Series VIII 30' discovator, 5-bar spike harrow
- \*\*JD 1990 36' CCS air seeder, 7 1/2" spacing, bulk fill, CCS monitoring, rate adjustment, rough
- Friesen 220 BS7 seed tender w/Meridian gear & Honda gas engine
- \*\*JD 158 loader, 7' bucket w/grapple
- JD CX 20 batwing shredder
- NECO 51A rotary seed cleaner on single axle trailer, Never Used
- EZ Trail 710 grain cart, side dump, 24.5/32 rubber, needs tarp replaced
- JD semi-mount 6 x 18" plow
- JD 8300 20-hole double box grain drill, 7 1/2" spacing
- JD 455 30' till drill w/double box 3-fold grain drill, 7 1/2"
- JD 1700 Max E Merge Plus 8-row-30" 3 Pt planter, Vac U Meter, Row Trac 250 monitor

- Richardson forage dump wagon
- EZ Sweep hydraulic bunk cleaner, quick tach, 21.5"
- Farm King 13"x95' auger w/hopper
- Westfield MK-100-71 PTO auger, slight wind damage
- 10"x30' 7.5 HP220V 2-wheel elec auger
- United Farm Tools 500 bu. grain cart, 18.4/26 rubber, rough
- 4-wheel 10-ton gear 350 bu. gravity wagon
- JD 5400 SP 4-row cutter w/5830 chopper mechanism & 619 engine, new spout
- JD 3970 silage cutter w/3-row head & pickup header
- (2) Gnuse silage wagons w/Westendorf 4-wheel gears, 6'7"x8'x13'
- Dohrman 4-wheel gear box wagon w/hoist, 6.5'x10'
- Snow V-plow, 10'8", w/hyd lift mount
- Parker 1010 dual wheel grain cart,480/80R42 rubber, needs new tarp

### SWATHER • HAYING & FEEDING EQUIP

- \*\*2024 NH Speedrower 220 Plus w/Durabine 416 Plus 16' rotary header, SN: HAJSR22HVRG681424, 122 hours, GPS capable, 600/65R28 rubber, 1-Owner
- \*\*Kuhn SR 600 GII 14-wheel Speed Rake w/wind band, SN: 0010, Looks New
- \*\*Hay Buster Short Cut 2665 bale processor, SN: 2622062165
- JD 569 premium baler w/cover edge
- Hoelscher 10-bale accumulator w/JD mount
- Kuhn Knight 136 RA feed wagon, Helix reel mix, Avery 640XL scale, 385/65R22.5 rubber
- Schuler SRM474 ribbon mixer wagon, 16' box
- JD 680 PTO manure spreader w/16'6" box, needs floor
- NH 195 manure spreader w/slope gate, poly floor
- JD 54 PTO manure spreader, 24" x 14" box, needs floor
- JD 2-bale mover w/quick tach mount
- Bar 6, 600 & 1200# cake feeders
- Notch 20'x7 1/2' slat bar P/T dolly front hay feeder
- (5) Apache 20'x7 1/2' slant bar 4-wheel feeders, showing wear
- E Z Trail dual-purpose low-profile hay transport w/portable slant bar 21'6" sides, 26x12.00x12 rubber
- 3 Pt 2-bale mover
- NH 259 5-bar rake
- JD 346 wire square baler

### SEMI TRACTORS • GRAIN HOPPERS

- \*\*2007 Freightliner Conv Columbia, VIN: 1FUJA6CK97LX766663, tandem twin screw, 201395 miles showing, E/F 10 Spd trans w/engine brake, Detroit engine, air slide 5th wheel, 295/75R/22.5 rubber
- \*\*2005 Sterling AT9500 Conv, VIN: 2FWJA3CV55AN93456, tandem twin screw, 423210 showing, E/F 10-Spd w/engine brake, Mercedes engine, right fender with damage, 295/75R/22.5 rubber
- \*\*1998 Ford Aeromax Conv H AT9513, VIN: 1FTYY96Y9VWA05478, 10 Spd E/F trans, 630,895 miles, 17,742 engine hours, Cummins diesel engine, 295/75R22.5 rubber
- \*\*2017 Wilson DWH 651 Pacesetter 42' hopper trailer, 102", VIN: 4WW4432A3H7713442, Lock Down elec tarp, 68" sides, 295/75R22.5 rubber
- \*\*2014 Wilson Commander DWH 500C 42' hopper trailer, 96", VIN: 1W14432A1E2262205, Thunder 6000 electronic tarp, Roller Strap tarp hoppers, 11R/22.5 rubber, outer skin w/cut
- \*\*1992 Timpette 42' manual hopper trailer, VIN: 1TdH42225NB083812, w/Shur-Lok manual tarp, spring suspension, 285/75R24.5 rubber, salvage title

# DAY 2: SATURDAY, FEBRUARY 28, 2026 • 10:30 AM

**Auctioneer's Note: SATURDAY AUCTION TO START WITH MISCELLANEOUS & PARTS ITEMS, LUMBER/TILE/CULVERTS, 4-WHEELERS, YELLOW IRON, TREE SPADE, PICKUPS, TRAILERS & WAGONS!!**

### \* \* INTERNET LISTED ITEMS (12-NOON)



THE MOST TRUSTED MARKETPLACE FOR EQUIPMENT & TRUCKS.

### CONSTRUCTION EQUIPMENT (12-NOON)

- \*\*2019 JD 300GLC excavator, SN: 1FF300GXTJF731018, 1800 hours, 54" bucket w/thumb, quick coupler, 32" pads, 12'4" arm
- \*\*2014 JD 544K 4-wheel high lift loader, SN:1DW544KHTEE665032, 400 hours, 104" bucket w/Grab Tech mounts, heated seat, Cab/Air/Heat, J D 524-544 quick coupler, ride suspension, rear object detection system, reverse fan drive, 20.5R25 rubber
- \*\*Grab Tec GA 965 quick tach 99" 5-shank grapple
- \*\*Paladin 91" 5' pallet fork
- \*\*2012 JD 700K XLT crawler w/Vail 3-tooth ripper, SN:1TO700KXCCE231644, 953 hours, 6-way C-frame 10" blade, suspension heated seat, Cab/Air/Heat
- \*\*2008 JD 755D crawler loader, 96" teeth bucket w/3-shank ripper, SN: LU755DX009903, 1048 hours, 20" tracks, Cab/Air/Heat
- \*\*2012 JD 850K WT crawler w/semi-U 140" blade, SN:1T0850KXJDE239250, 1213 hours, 30" tracks, Cab/Air/Heat, 3-shank JD ripper, Cab/Air/Heat
- \*\*2014 Vermeer RT1250 8"x10' trencher, VIN:1VR4112EX71000296, 786 hours, ROPS, back hoe model B930A w/16" bucket & 38/18.00 rubber
- \*\*1996 JD 410D turbo MFWD 4-Spd back hoe loader tractor w/410D extendable back hoe, SN: G824121, 3427 hours, 12, 24 & 30" hoe buckets & 90" loader bucket, 21L/24 rubber
- \*\*1997 JD 644G cab wheel loader, SN: DW644GD561883, 2946 hours, cab interior rough, auxiliary hyd, 110" bucket & Grab Tech mounts, 235/25 rubber, runs well
- \*\*1998 JD 770CH motor grader SN: DW770CH568905, 14' blade, 7268 hours
- \*\*2000 Volvo A35C 6x6 articulated off-road dump truck, SN: A35CV 60575, 10178 miles showing, automatic trans
- \*\*1983 JD 862 paddle scrapper, SN: T00862X00429, hydraulically sound, cab wiring harness needs attention
- \*\*Thunder Creek EV750 tandem axle ball hitch fuel tender, 12-V pumps & solar panel, w/50-gal DEP tank, 235/80R16 rubber
- \*\*2024 Agri Drain HD tandem axle tile trailer, self-contained remote w/12V hydraulic, New

### TRUCK/TREE SPADE • TRAILERS

- \*\*1991 International 4600 S Series truck, VIN: 1HTSAZRM5NH429064, GVWR 26,000#, Navistar V-8 diesel engine, 7-Spd, 233,658 miles, single dual axle w/10R/22.5 rubber and mounted Vermeer 50M self-contained hydraulic tree spade, Moved 6 trees
- 2000 Dynaweld 70X-20 deck trailer, VIN: 4U181DGY1039093, 9' top deck & 25' bed deck, 100" wide w/beaver tail, dual tandem axle, 215/75R17.5 rubber
- 1994 Trail Eze DG5023H3 low boy detach 50 T trailer, SN:1DAR3D716RM011188, 23' main & 15' rear decks, 6" wide, dual triple axle, 255/70R22.5 rubber, frame showing wear
- 2013 Overbilt 5th wheel 85000# lowboy trailer, VIN:1Z9NC4222D00585359, top deck, 7' middle deck w/5' beaver tail w/ramps, rough floor
- 2009 Titan gooseneck wood flatbed trailer, VIN:4TGF3020291052351, 24'x100" deck, 5' beaver tail & 6' Mega Flip ramp, need 2-floor planks replaced
- 2003 Trav A Long gooseneck wood deck flatbed dual tandem axle trailer, VIN: 4DYF5242731023351, 8'x20' w/beaver tail. 235/85R16 rubber
- 1984 Ford F8000 Conv truck, VIN: 1FDXK87L8EVA25346, 5/2 Spd trans, Cat diesel engine, w/Vanguard 50 hyd boom bucket lift, not running & boom lift leaks
- Homemade pinto hitch single axle dolly
- Trans Craft steel 40' deck trailer, VIN: TC7033 rough

### 4-WHEELERS

- 2012 Honda Rubicon, salvage green
- 2005 Honda Rancher ES 350, not running, body above average
- 2014 Honda Foreman ES, average condition, runs

### PICKUPS • TRAILERS • WAGONS

- 2015 Ford F350 XLT super cab 4WD pickup, 53835 miles, VIN:1FD7X3F66FEA11079, 6.2 gas engine, Auto 6-Spd trans, cloth seats,Bradford 9.5' 6-compartment deck, new LT245/75R17 rubber
- 2005 Ford F250 Super Duty 4x4 pickup, VIN: 1FDFN21585EC46441, 145,598 miles, 5.4 Triton gas engine, automatic, cloth seats, Knapheide 8-door steel utility body, 245/17 rubber and

- 2005 Ford F350 XLT Super Duty 4x4, VIN: 1FDWF37P25EB91147, manual lockouts, 6.0 diesel pickup, automatic, 114000 miles, 9' flat bed, LT 245/75R/17 rubber
- 1994 Ford Bronco, VIN:1FMEU15H8RLB53375, replaced rear end, runs, rough
- (2) 4-wheel gear 8'10" x 20' steel deck trailers, 10-ton gear, 6-bolt 11L/15 rubber
- PK 12-ton 4-wheel gear w/hoist steel box trailer, 8' x 67" T x 12', 8-bolt 12.5L/16 rubber
- Gnuse 12-ton gear box wagon 8' x 60" T x 12', 8-bolt 12.5/16 rubber
- Electric 10-ton 4-wheel gear w/14' wooden truck box, 8-bolt wheels
- 4-wheel gear galvanized box wagon w/hoist 6 1/2' x 9 1/2' w/wooden floor
- Ball hitch single axle wood deck 80" x 12' trailer w/rear & side ramps
- Ball hitch steel deck tandem axle 82" x 20' trailer
- Ball hitch wood deck tandem axle 80" x 18" w/3' dove tail trailer, P215/75R15 rubber
- Bumper hitch tandem axle trailer w/1000-gal poly tank w/Honda GX160 transfer pump
- Donahue gooseneck tandem axle 13'6" swather trailer w/5' beaver tail, Certificate of Origin, BOS
- Homemade dolly front 102"x30" steel deck low boy, 8.25R/20 rubber
- 1996 Titan gooseneck tandem dual wheel axle flatbed, 96"x24' w/5' beaver tail & ramps, salvage

### MISCELLANEOUS

- Star Fire 3000 globe guidance system
- Paladin US-70 vibrating elec rock screen, 3 HP single phase, 58" hopper (Looks New)
- Water transfer set of 2400 & 1700-gal poly tanks w/Honda DX160 pump
- Sukup 220-V seed cleaner
- Hotsy 797SS 2000 PSI hot water pressure sprayer, Nice
- Miller 250 AC/DC stick welder
- Miller Matic 252 wire welder w/bottle
- Milwaukee 12" chop saw
- Black Bull 16 Spd drill press
- Clark parts washer
- 36" bed band saw
- Carolina 100,000# H-press
- Coseng C211 CIT pedal air tire machine, Near New
- Val 6 111,000 BTU 100W heater, Near New
- Northern 212cc gas engine air compressor
- JD twin tank air compressor w/Subaru gas engine - 4 to 12" PCV fittings
- 110-gal L-shape diamond plate fuel tank
- (2) acetylene torch tail bottle sets - (15) 16' bridge planks - 600-gal fuel tank w/12-V pump
- (50) bags Form-A-Feed Power Pro mineral
- (24) bags 4 Sq Breeder 20% cubes
- (5) Form-A-Lick mineral tubes
- (5) 64" edge-to-edge bale wrap - JD parts: tractor & dozer air-oil-fuel filters
- 569 baler parts
- planter, disc & sprayer parts
- new 3ph 6HP dual shaft motor
- new 20-gal abrasive 60-125 PSI blaster
- new hydraulic solution pump
- new electric water pump
- (2-boxes) baling wire
- (2) new 6-bolt 15" implement wheels
- shovels-shanks & rolling disc & other part items.

## IN-PERSON & ONLINE 2-DAY AUCTION

## LOCATION: REYNOLDS, NE

**\* GPS LOCATOR & CELL PHONES NOT RELIABLE \***

**FROM REYNOLDS, NE:**  
Intersection of Hwy 8 & 560th Rd (Blacktop), 5-miles South to 29th Rd, 1-mile West to School St (MAHASKA, KS), 2-miles North to Y-in the road and 1/4 mile West.

**FROM WASHINGTON, KS:**  
Hwy 15 North to 29th Rd, 10-miles West to School St (MAHASKA, KS), Follow directions above.

**IF FROZEN OR DRY COUNTY ROAD CONDITIONS:**  
Hwy 8 & Jefferson/Thayer County Line, 3-miles South to 703rd Rd & ¾-mile east.

**ALTERNATE ROUTE – USE WITH CAUTION:**  
Intersection of Hwy 8 & 560th Rd (Blacktop), 2-miles South to 704th Rd, 1-mile West to 559th!



**RICK JURGENS**  
Wymore, 402-520-0350

**GALE "SLIM" HARDIN**  
Blue Springs, 402-520-2911

**DENNIS HENRICHS**  
Beatrice, 402-239-8741

**DAVE BURES**  
Odell, 402-239-9717

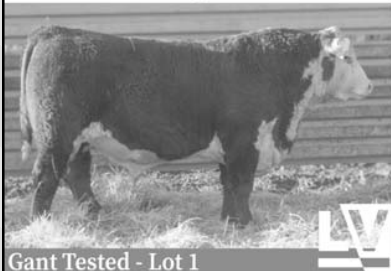
**FOR AUCTION LISTING & PICTURES**  
VISIT OUR WEBSITE: [www.theauctioneers.us](http://www.theauctioneers.us)

# AUCTION

Est. 1914

## GANT HEREFORDS

*Annual Bull & Female Sale*  
Selling 35 Bulls and 20 Bred Heifers



Gant Tested - Lot 1



Gant Valor - Lot 23

**1PM Friday, February 27, 2026**  
2 miles West of Geddes, SD  
Online at [www.Live-Ag.com](http://www.Live-Ag.com)



[www.GantHerefords.com](http://www.GantHerefords.com)



ONLINE SALE

**MARCH 3, 2026**

SELLING ANGUS, SIMANGUS, & RED ANGUS BULLS

**DVAuction**  
Broadcasting Real-Time Auctions

HHR MAN IN BLACK N013 • AAA 21376823



LAR Man In Black x HHR Blackbird K202  
HHR ARROWHEAD N023 • ASA 4587281



TJ ARROWHEAD 263G x HHR PRINCESS G067  
HHR GUARANTEE N107 • RAAA 5151541



TAC GUARANTEE J117 ET x HHR BLUET L174

HHR JAILBREAK N015 • AAA 21372472



HHR Jailbreak H111 x HHR Blackbird L139  
HHR ADDITION N066 • ASA 4587284



EXAR ADDITION 9022B x HHR PRINCESS L047  
HHR ENERGIZE N054 • RAAA 5151537



BIEBER CL ENERGIZE F'21 x HHR PRINCESS RED G017

ANGUS SIRES: Jailbreak, Addition, Man In Black, True Grit, True North, National, Absolute, Security  
SIMANGUS SIRES: Arrowhead, Bedrock

Jay & Deanna Poppe 402-640-9031 | Gary & Karen Poppe 402-640-1259 | Bloomfield, Nebraska

[POPPEBULLS.COM](http://POPPEBULLS.COM)

## ANGUS BULL & HEIFER SALE FEBRUARY 28, 2026

**VALENTINE LIVESTOCK AUCTION**  
2 PM CST • Following Ravenscroft Red Angus Sale



SELLING TOP QUALITY: 60 YEARLING BULLS & 10 ELITE OPEN HEIFERS

Sired by: ELLINGSON PROLIFIC • SITZ INCENTIVE • SAV MAGNUM • HOFFMAN THEDFORD • S POWERPOINT  
KG JUSTIFIED • EXAR STEP UP • SCHIEFELBEIN TOP GUN • COLEMAN BELOW ZERO • SAV ROCKSTAR



She Sells! Connealy Commerce X SAV Resource



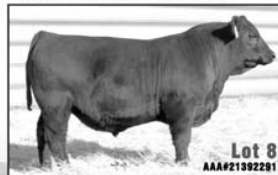
She Sells! Sitz Incentive X Discovery



She Sells! Ellingson Prolific X Basin Payweight 1682



He Sells! Sired by Schiefelbein Top Gun  
6 Top Gun sons like this sell!



He Sells! Sired by Ellingson Prolific  
7 full-bodied Prolific sons like this sell!



He Sells! Sired by S Powerpoint  
Many powerful & attractive calving ease bulls like this sell!



Selling 10 embryo transfer sons of Coleman Donna 897  
sired by Prolific, Top Gun, and Step Up!

**Bowlin Cattle Company**

35802 Boiling Springs Rd • Cody, NE 69211  
Dale: 402-389-2142 • Karen: 402-389-0205

[bowlincattle@gmail.com](mailto:bowlincattle@gmail.com)

[WWW.BOWLINCATTLE.COM](http://WWW.BOWLINCATTLE.COM)

Stay in town until 5:00pm CT &  
attend Delaney Cattle  
Service Angus bull sale at their  
place north of Valentine.

**DVAuction**  
Broadcasting Real-Time Auctions

Search:  
Ravenscroft Red Angus/Bowlin Cattle

**CHANGE IN FORMAT!**  
"LADIES FIRST"  
— Selling Heifers at 1pm followed by Simmental Bulls & then the JK Angus Bulls

**FRIDAY, MARCH 6TH AT 1:00 PM**  
at the Farm, Salem, SD

**Eichacker Simmentals And Angus**

**Annual Production Sale 2026**



ES NK46 3/4 SM  
KRJ DAKOTA OUTLAW G974 X  
CLRS HOMELAND 327H



ES NG18 3/4 SM  
FIVE STAR JACKSON J10 X  
LEACHMAN CADILLAC L025A

130+ Bulls &  
35 Pairs & Bred  
Females  
Simmental  
SimAngus™  
Sim/Red Angus,  
and Angus

**Selling  
172  
Head!**

GUEST BREEDER:  
**JK ANGUS**  
Billy Kapperman  
605-940-2504  
Ross Hoefker  
605-359-5022



JK BROADVIEW 580 PBAN  
WAR BROADVIEW E560 K4116 ET X  
J&J WEIGH UP 294



ES NK17 PB SM  
ES TORNADO LH129-3 X  
TJ GOLD 274G



ES NK82 3/4 SM  
LCOR DILIGENCE 215J X  
CLRS HOMELAND 327H



ES M145 PB SM  
TJ 50K 485H X REMINGTON LOCK N  
LOAD 54U • HEIFER CALF AT SIDE BY  
WBF PATTON K059

**Eichacker Simmentals**  
Salem, SD

Steve & Cathy Eichacker  
Home 605-425-2391  
Cell 605-421-1152  
Adam Eichacker 605-421-0554

ONLINE BIDDING AT:  
**DVAuction**  
Broadcasting Real-Time Auctions



# SCHIEFFER ANGUS BULL SALE

Friday, March 6 at 11:00am  
Stockmen's Livestock, SD *Please Join Us!*

BIDDING AVAILABLE ONLINE AT [WWW.CATTLEUSA.COM](http://WWW.CATTLEUSA.COM)



## Selling 30 Yearling Black Angus Bulls

Born December/January/February

Sires Represented: Hoffman High Road, Hoffman Thedford, HPCA Veracious,  
LVVF Tanker 14, Schiefelbesn North Star 6770, EAR Acclaim 362

TO VIEW THE BULLS PRIOR TO SALE DAY CALL:  
John Schieffer 605-661-8531 or Marnie Schieffer 605-661-8526



51<sup>ST</sup> ANNUAL PRODUCTION SALE

NEW SALE DATE

WEDNESDAY, FEBRUARY 25, 2026

1PM SALE TIME

38735 108<sup>TH</sup> STREET, FREDERICK, SD

ANGUS FARMS

125 Angus Bulls, 15 Elite Angus Heifers, 50 Replacement Heifers

HART BOUGIE 5137

+\*21358474



Hart  
+\*BNWZ BOUGIE 1588 X +\*BELLE ISABEL 8624 J452

CE	BW	WW	YW	SC	DOC	HP	CEM	MILK	CWT	MARB	RE	FAT	SM	SB	SC	
+8	+2.3	+89	+159	+63	+26	+10.9	+7	+29	+105	+1.17	+1.53	-.022	+72	+87	+260	+409

HART NETWORK 5009

\*21348286



Hart  
+\*HART NETWORK X +\*BYRD RITA JAM 8132-3058

CE	BW	WW	YW	SC	DOC	HP	CEM	MILK	CWT	MARB	RE	FAT	SM	SB	SC	
+7	+2.6	+103	+167	+51	+32	+12.8	+8	+22	+87	+1.25	+94	+0.56	+104	+101	+209	+375

HART RITA 5099

+\*21356361



Hart  
+\*BNWZ BOUGIE 1588 X +\*DBA RITA 2613

CE	BW	WW	YW	SC	DOC	HP	CEM	MILK	CWT	MARB	RE	FAT	SM	SB	SC	
+10	+1.7	+95	+172	+1.45	+16	+11.3	+16	+26	+99	+1.72	+1.12	+0.56	+64	+91	+269	+413

HART POLLY 5216

+\*21348315



Hart  
+\*HART NETWORK X +\*JCH J&K POLLY 1600

CE	BW	WW	YW	SC	DOC	HP	CEM	MILK	CWT	MARB	RE	FAT	SM	SB	SC	
+14	-7	+79	+132	+1.38	+24	+11.2	+10	+31	+65	+1.16	+1.16	+0.59	+121	+101	+185	+361

61 Years of Angus

HART ANGUS FARMS

38735 108th St. | Frederick, SD 57441

hartangusfarms@nvc.net

Brad Hart 605.329.7211 • Alex Hart 605.216.1019



Sale Managed by:

Zach Moffitt Cattle Marketing 336.736.6340

[www.zmoffittcattlemarketing.com](http://www.zmoffittcattlemarketing.com)

Seth Weishaar 605.210.1124 Auctioneer



SCAN TO VIEW  
OUR  
SALEBOOK

# AUCTIONS & REAL ESTATE

## AUCTION Stanton Offices



Feb. 27<sup>th</sup>, 2026 • 1:00 pm

2 Separate office spaces. New construction! 1,000 sq ft each.  
Each with their own bathroom and separate utilities.  
Excellent Highway Exposure!

See more PHOTOS and INFO via our website:

[www.RestAgAuction.com](http://www.RestAgAuction.com)

Russ Wilcox • 402-841-2116

Realtor, Real Estate Solutions Team

## LAND FOR SALE

### CUMING COUNTY, NEBRASKA

#### 160± ACRES DRYLAND FARM

##### Legal

The SE ¼ of Section 4-23-6E  
Cuming County, NE, containing  
160± acres.



##### Location

From the intersection of HWY 9 & HWY 51  
north of West Point, NE, go 1 mile west on  
HWY 51 and a ½ mile south on 16th Rd.

### PIERCE COUNTY, NEBRASKA

#### 160± ACRES IRRIGATED FARM

##### Legal

The SW ¼ of Section 9-27-1W  
Pierce County, NE, containing  
160± acres.



##### Location

From the intersection of HWY 81 & HWY 20,  
go 3 miles south on HWY 81 and a ½ mile  
west on 862nd Rd.

For additional information, visit [www.bigiron.com](http://www.bigiron.com)

Contact "Your Farm & Ranch Specialists"

John Stock 402.920.3180

Jim Stock 402.920.0604

**BigIron**  
REALTY

4860 33rd Avenue, Columbus, NE 68601

## LEADER ANGUS FARM

54<sup>th</sup> Annual  
Black Angus Production Sale

**SATURDAY**

FEBRUARY 21, 2026

1:00 P.M.

Featured Sires:

- Baldrige Kashmir
- Bruns High Point 082
- Carter Bronc 2415
- Connealy Cadillac 3840
- Connealy Fair-N-Square 6671
- Connealy National 5817
- Connealy Wildcat 393X
- Ellingson Badlands 2194
- Ellingson Rangeland 1168
- K A Growth Fund B919
- Leaders Enforcer 20
- Leaders Homestead 17
- Leaders New Day 28
- McConnell Bomber 0611
- S Architect 139
- S Tahoe 1198
- Schiefelbein North Star 6770



SELLING 120 HEAD

REGISTERED  
ANGUS CATTLE

70-2-YEAR OLD BULLS

25-YEARLING BULLS

10-BRED HEIFERS

15-YEARLING HEIFERS

LEADER ANGUS FARM  
GORDON LEADER OR MARK LEADER  
(402) 388-4949 (605) 660-1933  
55368 HWY 12 CROFTON, NE



Sale Will Be Held At The Ranch...

2 Miles East of Crofton, NE on Highway 12

2 Miles West of the Highway 81 and 12 Junction

## FREDERICK ANGUS

BRENT FREDERICK  
402.340.1039

Annual Production Sale

February 24, 2026 1:00 PM CST



5185 - O'Connell Sunpower



51 - Ellingson Prolific



5725 - Connealy Craftsman



5651 - Deep Creek Square Deal

POUNDS PAY!





# *The* WINDOW SHOP



## **FREE TRIPLE GLAZING UPGRADE**

**Ends March 31, 2026**

**A Norfolk  
Location Will Be  
Opening Soon!**

**Norfolk, NE | Mitchell, SD | 605-996-6777  
www.TheWindowShop.com**





**NOW HIRING!**  
**MAINTENANCE  
 TECHNICIAN**

**\$3,000 New Hire Incentive!**  
**JOB TRAINING PROVIDED!**  
**PAID TIME OFF - INSURANCE  
 RETIREMENT PLANS**

IF YOU ARE INTERESTED IN JOINING OUR  
 TEAM AT THE ATKINSON ETHANOL PLANT

**STOP IN AND APPLY IN PERSON**  
**at 87590 Hillcrest Rd, Atkinson**  
**ask for an application**  
**or send a resume to**  
**meganb@huskerag.com**



**NORFOLK VETERANS' HOME IS SEEKING**

Full Time  
**Maintenance Specialist**  
 to join our dynamic team!  
**Hours: 2:30-11PM**

For Job Details And To Apply,  
 visit <https://veterans.nebraska.gov/employment-ndva>

**NORFOLK VETERANS' HOME**  
**"CARING FOR AMERICA'S HEROES"**  
**600 E. BENJAMIN AVENUE NORFOLK, NE.**  
**402-370-3141**




EOE/AA/V

**WISNER**  
**CARE CENTER**

*Continuing a Legacy of Quality Care*  
**VA Certified Nursing Home**

If you are looking for a great paying job in a caring  
 environment apply and be a part of our team!

**NOW HIRING** for the following position  
 .....

**LPN/RN**  
 Full-time or Part-time -- Overnight  
 .....

Apply by calling (402) 529-3286  
 or apply online at Indeed.com

Owned & operated by the City of Wisner  
 Wisner Care Center • 1105 9th St., Wisner, NE 68791

**OPEN POSITIONS**

**Clinic Nurse (RN or LPN)**  
 Full or Part Time

**Staff Nurse (LPN or RN)**  
 Full Time

**Radiology Technician**  
 Full or Part Time

**Retail Pharmacy Technician**  
 Full Time

 **Antelope Memorial Hospital**  
 102 W 9th St., Neligh, NE  
 402-887-4151

Healing Body, Mind and Spirit  
 This institution is an equal opportunity provider and employer

**Norfolk Veterans Home has great career  
 opportunities in Dietary!**

**Full-Time & Part-Time  
 FOOD SERVICE COOK**

For Job Details And To Apply,  
 visit <https://veterans.nebraska.gov/employment-ndva>

**NORFOLK VETERANS' HOME**  
**"CARING FOR AMERICA'S HEROES"**

 **600 E. BENJAMIN AVENUE NORFOLK, NE.**  
**402-370-3141**



*We're*  
**HIRING**

**HUSKER AG IS CURRENTLY SEEKING APPLICATIONS FOR**

**FULL TIME  
 PLANT OPERATOR POSITION**

• EXCELLENT BENEFITS PKG. • TRAINING PROVIDED

Benefits include: Paid vacation & holidays, 401(k) retirement plan, quarterly  
 profit sharing, health insurance, long-term and short-term disability, group life  
 insurance, dental & vision insurance and flex spending account for dependent care

If interested please submit a resume to or complete an application at:

 **Husker Ag, LLC**  
**54048 Hwy 20, Plainview, NE 68769**  
**(402) 582-4446**  
**or send a resume to**  
**meganb@huskerag.com**

**WE ARE  
 HIRING**

**PLANT OPERATOR**  
 PAID TIME OFF - INSURANCE  
 RETIREMENT PLANS  
**\$3,000 New Hire Incentive!**

IF YOU ARE INTERESTED IN JOINING OUR  
 TEAM AT THE ATKINSON ETHANOL PLANT

**STOP IN AND APPLY IN PERSON**  
**at 87590 Hillcrest Rd, Atkinson**  
**ask for an application**  
**or send a resume to**  
**meganb@huskerag.com**




**C.N.A.**  
**Opportunities At**  
**Norfolk Veterans Home!**  
**Part-Time & Full-Time Available!**  
**Wage Based On Experience**  
**\$24.15 - \$31.22/hr (\$3 Differential Included)**

For Job Details And To Apply,  
 visit <https://veterans.nebraska.gov/employment-ndva>

**NORFOLK VETERANS' HOME**  
**"CARING FOR AMERICA'S HEROES"**  
**600 E. BENJAMIN AVENUE NORFOLK, NE.**  
**402-370-3141**




EOE/AA/V

**HIRING MEAT MARKET MANAGERS**  
*Family Owned Grocery Stores in*

**NORTH  
 CENTRAL  
 NEBRASKA**  
 and  
**SOUTH  
 CENTRAL  
 SOUTH DAKOTA**  
 are looking for experienced  
**MEAT CUTTERS**

to advance to a  
**MEAT MARKET MANAGER**  
 VACATION, 401 K, and OTHER BENEFITS AVAILABLE.

SEND YOUR RESUME TO:  
**nesdmeatmanager@gmail.com**





PRESIDENTS' DAY

**SALE**

**Now Thru Saturday, February 21<sup>st</sup>, 2026**

**SAVE up TO  
\$500**

**On In Stock**

**Carpet, Vinyl Plank & Vinyl Tile From**



**And More!**

**Financing Available \***

**\*Ask Store Associate for Complete  
Rebate and financing details**



**3206 Raasch Dr., Norfolk, NE  
(West of Faith Regional Hospital)  
(402) 379-5757**



**Regular Store Hours: Mon.-Fri., 9am-5pm, Sat. 9am-1pm  
[www.NorfolkFlooringSolutions.com](http://www.NorfolkFlooringSolutions.com)**



MISCELLANEOUS

Peace of mind & early detection  
Now more than ever, it's important to get screened for Stroke & Cardiovascular Disease risk. Life Line Screening is simple & painless. 833  
-  
970  
-  
4172

Pest control: Protect your home from pests safely. Roaches, Bed Bugs, Rodent, Termite, Spiders & more. Locally owned & affordable. For service or inspection today! 833-860-0657 Have zip code ready!

Portable Oxygen Concentrator May Be Covered by Medicare!  
Reclaim independence and mobility with the compact design and long-lasting battery of Inogen One. Free information kit! Call 877-305-1535

Prepare for power outages today with a Generac Home Standby Generator. Act now to receive a FREE 5-Year warranty with qualifying purchase\* Call 1-855-948-6176 today to schedule a free quote. It's not just a generator. It's a power move.

Professional lawn service: Fertilization, weed control, seeding, aeration & mosquito control. Free quote. Ask about first application special! 833-860-0811

Reach millions of homes nationwide with one easy, affordable buy in the ADS Network! For more information [www.communitypublishers.com/category/all-products](http://www.communitypublishers.com/category/all-products)

Replace your roof w/the best looking & longest lasting material steel from Erie Metal Roofs! 3 styles & multiple colors available. Guaranteed to last a lifetime! Limited Time Offer up to 50% off install + Additional 10% off install (military, health & 1st responders.) 1-833-370-1234

TOP DOLLAR PAID for old vintage guitars! Gibson, Fender, Martin, Greesch, Rickenbacker, Epiphone, Etc. 1930's to 1980's. Call 866-433-8277

Water damage cleanup & restoration: A small amount of water can lead to major damage and mold growth in your home. Our trusted professionals do complete repairs to protect your family and your home's value! Call 24/7: 1-833-887-0117. Have zip code of service location ready when you call!

Wesley Financial Group, LLC Timeshare Cancellation Experts Over \$50,000,000 in timeshare debt & fees cancelled in 2019. Get free info package & learn how to get rid of your timeshare! Free consultations. Over 450 positive reviews. 833-308-1971

PETS & SUPPLIES

Toy Poodle puppies...8 weeks old, shots & dewormed. Call 402-608-0421.

SERVICES

PAINTING! Need interior painting done? Over 20 years of experience! Call 402-371-3190

Tree trimming, removal and backyard stump removal. Insured. Tree shearing available. Free estimates. Kerbel Tree Service. Call 402-439-2979 or 402-649-3856.

NATIONAL NETWORK

AFFORDABLE TV & INTERNET. If you are overpaying for your service, call now for a free quote and see how much you can save! 1-866-472-7954. (mcn)

ATTENTION OXYGEN THERAPY USERS! Discover Oxygen Therapy That Moves with You with Inogen Portable Oxygen Concentrators. FREE information kit. Call 1-833-650-5916. (mcn)

AUDIEN HEARING. The world's first hearing aid with touchscreen controls. No tiny buttons, apps or prescriptions. 45-day risk free trial. Free shipping. Lifetime support. More than 1.5 million happy customers. Call Audien 1-866-698-3418 (mcn)

CASH PAID FOR HIGH-END MEN'S SPORT WATCHES! Rolex, Breitling, Omega, Patek Philippe, Heuer, Daytona, GMT, Submariner and Speedmaster. Call 1-833-641-6646. (mcn)

Get a break on your taxes! Donate your car, truck, or SUV to assist the blind and visually impaired. Arrange a swift, no-cost vehicle pickup and secure a generous tax credit for 2025. Call Heritage for the Blind Today at 1-855-977-7030 today! (mcn)

NATIONAL NETWORK

Donate your car, truck, boat, RV and more to support our veterans! Schedule a FAST, FREE vehicle pickup and receive a top tax deduction! Call Veteran Car Donations at 1-888-429-2331 today! (mcn)

*Benson Land Tiling, Excavation & Dozer Work*

Shop **402-337-5354**  
Cell **605-760-2408**

*Servicing Nebraska, South Dakota and Iowa*

**Curt Benson**  
Randolph, NE  
[bensonlandtiling@gmail.com](mailto:bensonlandtiling@gmail.com) • [bensonlandtiling.com](http://bensonlandtiling.com)

*We Make Your Wet Spots Dry*

**Dozer Work**  
•Tear Down Building Sites  
•Clear Ditches-Tree Lines

**FREE ESTIMATES**

Heart Health Studies in Norfolk

If you have....

- High Cholesterol
- Obesity
- Type 2 Diabetes
- High Blood Pressure
- Chronic Kidney Disease

You may be eligible to join a study. No insurance needed.

Call (402) 371-0797

Visit [VelocityClinicalTrials.com](http://VelocityClinicalTrials.com)

3400 W Norfolk Ave, Norfolk, NE 68701



BIG DEALS



**'24 FORD F-350 CREW CAB LARIAT**

4x4, Diesel, 16,000 Miles  
**Moody Price** STK C68512 **\$78,995**

**'24 FORD F-350 REG-CAB**

4x4, 7.3L Gas  
**Moody Price** STK E92071 **\$49,995**

**'24 FORD F-150 CREW CAB XLT**

4x4, 22,000 Miles  
**Moody Price** STK E71527 **\$46,995**

**'24 FORD F-140 CREW CAB XLT**

4x4  
**Moody Price** STK A20789 **\$38,995**

**'24 FORD EDGE TITANIUM AWD**

**Moody Price** STK A49095 **\$32,995**

**'24 FORD EDGE SEL AWD**

20,000 Miles, Leather, Loaded  
**Moody Price** STK A66131 **\$29,995**

**'22 FORD F-150 CREW CAB**

4x4, Platinum  
**Moody Price** STK B96041 **\$49,995**

**'22 FORD EXPEDITION XLT**

4x4, Leather, 38,000 Miles  
**Moody Price** STK A50495 **\$49,995**

**'22 FORD EXPLORER TIMBERLINE**

AWD  
**Moody Price** STK A94437 **\$29,995**

**'21 FORD F-150 CREW CAB LARIAT**

4x4  
**Moody Price** STK B21897 **\$31,995**

**'20 FORD F-150 CREW CAB LARIAT**

4x4, Loaded  
**Moody Price** STK B71624 **\$29,995**

**'20 LINCOLN NAUTILUS RESERVE**

AWD  
**Moody Price** STK L10488 **\$22,995**

**'20 FORD F-150 CREW CAB XLT**

4x4  
**Moody Price** STK D90241 **\$20,995**

**'15 FORD F-250 CREW CAB XLT**

4x4, Diesel  
**Moody Price** STK C89879 **\$26,995**

**'13 FORD F-150 EXT CAB**

4x4  
**Moody Price** STK E05956 **\$15,995**

MATT MOODY

ALAN KEMP

HOLT ROBINETTE  
Finance Manager

# MOODY

## MOTOR

[www.moodymotor.com](http://www.moodymotor.com) • 1-800-745-5650

**Open 6 Days A Week**

**HOURS**  
Monday thru Friday  
8:00 a.m. - 5:30 p.m.  
**Saturday:**  
8:00 a.m. - 2:00 p.m.  
**Sunday:**  
Closed





# 30th Annual Bull Sale

## MARCH 12, 2026

1:00 PM • ATKINSON LIVESTOCK • ATKINSON, NEBRASKA

SELLING 100 **PERFORMANCE TESTED** ANGUS BULLS

INCLUDING 50+ LOW BIRTH WEIGHT, CALVING EASE BULLS!

FROM LEADING ANGUS SIRES

TBA Brunswick, LT Revered, Sitz Eternity, S Armstrong, Sitz Century, Kraye Big Country, Deep Creek Square Deal, Montana Killebrew, Connely Craftsman and more!

LOT 1 TBA ETERNITY 5120 21366181



SIRE: SITZ Eternity 739L

CED	BW	WW	YW	SC	DOC	MILK	CW	MARB	RE	\$M	\$C
5	1.5	85	141	0.81	25	39	69	0.99	0.95	107	338

LOT 4 TBA ETERNITY 5942 21366232



SIRE: SITZ Eternity 739L

CED	BW	WW	YW	SC	DOC	MILK	CW	MARB	RE	\$M	\$C
1	3.4	94	156	1.30	24	31	59	0.69	0.88	102	290

LOT 8 TBA ARMSTRONG 5353 21366205



SIRE: S Armstrong

CED	BW	WW	YW	SC	DOC	MILK	CW	MARB	RE	\$M	\$C
8	0.8	87	137	1.00	30	28	58	0.07	0.75	106	241

LOT 9 TBA ARMSTRONG 5301 21366246



SIRE: S Armstrong

CED	BW	WW	YW	SC	DOC	MILK	CW	MARB	RE	\$M	\$C
12	-1.2	86	154	1.18	25	29	73	0.75	0.50	88	311

LOT 18 TBA KILLEBREW 5225 21366867



SIRE: Montana Killebrew 2049

CED	BW	WW	YW	SC	DOC	MILK	CW	MARB	RE	\$M	\$C
10	-0.1	75	135	1.29	25	35	60	1.17	0.80	93	329

LOT 26 TBA BRUNSWICK 5125 21366167



SIRE: TBA Brunswick 1425

CED	BW	WW	YW	SC	DOC	MILK	CW	MARB	RE	\$M	\$C
10	1.1	78	132	1.78	28	29	52	0.52	0.60	94	259

LOT 27 TBA BRUNSWICK 5079 21366160



SIRE: TBA Brunswick 1425

CED	BW	WW	YW	SC	DOC	MILK	CW	MARB	RE	\$M	\$C
1	2.1	90	151	1.41	27	26	69	0.77	0.52	83	298

LOT 35 TBA BRUNSWICK 5117 21366180



SIRE: TBA Brunswick 1425

CED	BW	WW	YW	SC	DOC	MILK	CW	MARB	RE	\$M	\$C
13	0.3	72	119	1.45	32	24	38	0.68	0.27	66	215

LOT 92 TBA CENTURY 5166 21366169



SIRE: SITZ Century 747K

CED	BW	WW	YW	SC	DOC	MILK	CW	MARB	RE	\$M	\$C
6	1.2	95	154	1.45	32	32	77	0.44	0.90	126	321

Alex & Mary Brookhouser 402-929-0244

86540 526 Avenue | Brunswick, NE 68720

**TBONEANGUS.COM**

Online Bidding

**DVAuction**  
Broadcasting Real-Time Auctions

70+ Years  
Raising Registered Angus Cattle