

Sunday, May 10

Mother's Day

The Norfolk Area SHOPPER

CIRCULATION VERIFICATION COUNCIL

ECRWSS Presorted Standard US Postage Paid Permit No 57 Norfolk, NE 68701

View Us Online!

SCAN ME



MFCP Midwest Free Community Papers

Established In 1988 Serving Northeast Nebraska...

Boxholder Local or Rural VOID WHEN DELIVERED BY ANY OTHER METHOD Postal Patron

406 West Norfolk Avenue, Norfolk, NE 68701. 1-800-418-4101 (402) 379-4100 norfolkareashopper.com | Wednesday, May 6, 2026 • Volume 2 • No. 18

NATHAN ★★ ★ ECKSTROM

★ FOR MADISON COUNTY ATTORNEY



“What happens with the law *matters*. I have felt a call to serve in the legal field for the purpose of making legal decisions *well*.”

- Nathan Eckstrom, Deputy County Attorney for Madison County

Nathan Eckstrom is...

A proven courtroom lawyer, with experience in:

- Criminal cases (County and District Court dockets, including jury trials in both)
- Court of Appeals and Supreme Court cases
- Juvenile law
- Mental health proceedings

Committed to building on his strong relationships with law enforcement, supporting and equipping them with the information and tools they need

A dedicated public servant of Madison County who will prosecute swiftly, firmly, and thoroughly to keep our citizens protected

A clear and respectful communicator, enabling him to be effective in handling county issues as well as criminal cases

A local candidate, family man, and political conservative recently voted in as Secretary of the Madison County Republican Party

Vote for Nathan Eckstrom on May 12!

Web: NathanEckstrom.com

Email: eckstromforcountyattorney@gmail.com

Phone: (402) 860-4533



Paid for by Nathan Eckstrom for County Attorney, P.O. Box 963, Madison, NE 68748

**NORTHWEST
NORFOLK**

1200 N. 27th St., Thursday, Friday, Saturday 8:30am-?, Children and adult clothing, many sleepers, onesies, jeans and shoes, toys, book, puzzles, Barbies & Beanie Babies, baby equipment, knives & house plants.

**NORTHWEST
NORFOLK**

2210 Clearfield Drive, Friday 8AM-6PM, Saturday 8AM-2PM. Three family sale; golf clubs-irons, western books, Too much stuff to mention all. Cash Only.

**SOUTHEAST
NORFOLK**

1009 Monroe Ave., Multifamily Garage Sale; Friday 8:30AM-4:00PM, Saturday 8:30AM-11:00AM; Clothes (toddler, kids, adult), kitchenware, home decor, kids toys, shoes, purses/bags

AUTO PARTS

Turn your unwanted vehicle, running or not, into INSTANT \$\$\$. Free pickup! Contact Speedway Truck and Auto Salvage Inc, 807 E. Norfolk Ave, Norfolk, NE Monday-Friday 8am-5:30pm, (402) 371-3006. Licensed and Insured!

LIVESTOCK

BULLS! 1-YEAR, 2-YEAR HERFORD & SHORTHORN-PLUS! Give the small breeder a chance! Put pounds & quality in your herd for reasonable price. JMS Cattle, Mark 308-223-0967, Samantha 402-741-2377

PETS & SUPPLIES

O'Brien Angus selling breeder bulls, bred for calving ease & carcass quality. Call 402-649-1327 or 402-649-2997.

MISCELLANEOUS

AGING ROOF? NEW HOME-OWNER? STORM DAMAGE? You need a local expert provider that proudly stands behind their work. Fast, free estimate. Financing available. Call 833-640-4753 Have zip code of property ready when calling!

Benson Land Tiling, Excavation & Dozer Work

Shop **402-337-5354**
Cell **605-760-2408**

Dozer Work
•Tear Down Building Sites
•Clear Ditches-Tree Lines

FREE ESTIMATES

Servicing Nebraska, South Dakota and Iowa

Curt Benson
Randolph, NE

We Make Your Wet Spots Dry

Help improve lives.

Join a study in Norfolk. Study participants may also get study-related exams at no cost and receive compensation for participating.

- COVID-19 Booster Vaccines
- Heart Failure and Hypertension
- Chronic Kidney Disease and Hypertension
- Diabetic Neuropathy
- Newly Diagnosed T2D (Not on GLP-1)
- Heart Health
- Group B Strep and Maternal RSV (Pregnant Women)

Call (402) 371-0797
Visit VelocityClinicalTrials.com

Velocity
CLINICAL RESEARCH

ENTERTAINMENT

J&H Produce/Greenhouse is OPEN! 86229 531st Avenue, Plainview, NE. Open daily 7AM-Dusk. Large selection of perennials, annuals, hanging baskets, planters, succulents. 402-841-9522.

FOR SALE

Wide front hubs/wheels/tires repainted off a 1960 JD; 2-38" tractor rims, painted; 4-540 PTO pumps for loader; 2-13/6/38 tractor tires w/ tubes. Clearwater, NE 402-485-2887

Huwaldt's Herefords BULLS FOR SALE Guaranteed Breeders! Performance Info; www.edhuwaldt.com Randolph, NE 402-360-4387 402-360-4796

POPPE BULLS FOR SALE! Angus, Sim Angus, and Red Angus. PoppeBulls.com Horseshoe Hill Ranch, Bloomfield, NE Jay 402-640-9031

Registered, A.I.-sired, Angus and Balancer bulls. Semen tested. Free Delivery. See www.88ranch.com for info or call 402-655-2288, Orchard, NE

SERVICES

STUTZMAN FENCING 402-632-8047 Residential - Commercial - Farm; Vinyl fencing, privacy fencing, chain link, farm fencing, Serving Northeast Nebraska.

Tree trimming, removal and backyard stump removal. Insured. Tree shearing available. Free estimates. Kerbel Tree Service. Call 402-439-2979 or 402-649-3856.

Bath & shower updates in as little as 1 day! Affordable prices - No payments for 18 months! Lifetime warranty & professional installs. Senior & military discounts available. 1-877-543-9189

Become a published author. We want to read your book! Dorrance Publishing trusted since 1920. Consultation, production, promotion & distribution. Call for free author's guide 1-877-729-4998 or visit dorranceinfo.com/ads

Consumer Cellular - same reliable, nationwide coverage as the largest carriers. No long-term contract, no hidden fees free activation. All plans feature unlimited talk & text, starting at just \$20/mo. Call 1-877-751-0866

Dental insurance - Physicians Mutual Insurance Company. Covers 400+ procedures. Real dental insurance - not a discount plan. Get your free Information Kit with details! 1-855-526-1060 www.dental50plus.com/ads #6258

DIRECTV Stream - Carries the most local MLB Games! Choice Package \$89.99/mo for 12 mos Stream on 20 devices at once. HBO Max included for 3 mos (w/Choice Package or higher.) No contract or hidden fees! Some restrictions apply. Call IVS 1-866-859-0405

Donate Your Car to Veterans Today! Help and Support our Veterans. Fast - FREE pickup. 100% tax deductible. Call 1-800-245-0398

Spring Time Revival!

START EARNING **4.01% APY***

ON AN **11 MONTH CERTIFICATE OF DEPOSIT (CD)**

Do more with *your* money!

BankFirst banking on you.

*APY (Annual Percentage Yield) is subject to change. Rate valid as of 04/02/26. \$25,000 min. balance requirement. Restrictions apply. Fees may reduce earnings.

Celebrating Our Graduates
Congratulations & best wishes!

HyVee West

Graduating From College:
Cameron Donscheski
Jacie Pilger
Cassie Jacobs

Graduating From High School:
Katelyn Hasebroock
Makenna Barnhart
Ryan Ponto
Shaely Pena
Raegan Delancey
Kaden Howard
Bella Hupke
Marley Akin-Olugbade
Aubrey Cheetsos

HyVee East

Graduating From College:
Rudy Brunkhorst
Megan Gnirk
Kaden Pinnt
Sydney Sands
Sunny Stromer

Graduating From High School:
Maran Andersen
Galilea Angel-Peña
Breckn Bierschenk
Nicholas Clyde

Paco Cuevas
Zachary Foecking
Kaden Hinrichs
Nathan Hobbs
Cannon Jaeke
Lainey Jensen
Zaiac Johnson
Lola Kelberlau
Joshua Mercado
Lucas Peterson
Evan Peterson
Ethan Pysher
Ricardo Rosas
Avery Wantoch
Alexandra Witt

120 EAST NORFOLK AVE. East (402) 379-1706
& 2107 TAYLOR AVE. West (402) 371-7071



Where There's A Helpful Smile in Every Aisle
Plus... GREAT PRICES & GREAT SERVICE

MISCELLANEOUS

Don't let the stairs limit your mobility! Discover the ideal solution for anyone who struggles on the stairs, is concerned about a fall or wants to regain access to their entire home. Call AmeriGlide today! 1-833-399-3595

MISCELLANEOUS

Inflation is at 40 year highs. Interest rates are way up. Credit cards. Medical bills. Car loans. Do you have \$10k or more in debt? Call National Debt Relief and find out how to pay off your debt for significantly less than what you owe! Free quote: Call 1-844-955-4930

MISCELLANEOUS

MobileHelp America's premier mobile medical alert system. Whether you're home or away. For safety & peace of mind. No long term contracts! Free brochure! Call 1-888-489-3936

MISCELLANEOUS

No more cleaning gutters. Guaranteed! LeafFilter backed by no-clog guarantee & lifetime warranty. Call 1-833-610-1936 to schedule FREE inspection/estimate. Get 15% off your entire order. Military & Seniors get additional 10% off. Limited time. Restrictions apply, see rep for details



OTT CONCRETE CONSTRUCTION
402-694-6761
www.ottconcrete.com

OTT CONCRETE CONSTRUCTION PROVIDES TOTAL RESIDENTIAL AND COMMERCIAL CONCRETE CONTRACTING FOR CLIENTS IN CENTRAL AND WESTERN NEBRASKA.

Contact Us Today!
Free Estimates
Over 25 Years of Experience!

Foundation Services • Footings & Walls
Residential Concrete • Commercial Concrete
Industrial Flatwork
kara@ottconcrete.com

Home break-ins take less than 60 seconds. Don't wait! Protect your family, your home, your assets now for as little as 70¢ /day! 1-833-890-1262

Jacuzzi Bath Remodel can install a new, custom bath or shower in as little as one day. Limited time, waving all installation costs! Additional terms apply. Subject to change and vary by dealer. Offer ends 1-844-501-3208

Need cash quickly? We buy houses in any condition. Get a fair cash offer within 24 hours! Call today. Liz Buys Houses: 833-359-4707



MIKE TRADER'S Mid-America Basketball Camps
June 15-17 - Norfolk YMCA
July 20-23 - CCC Columbus
40th Annual
Check website for other dates & locations!
• Sidney HS • Norfolk YMCA • Bennington MS • Hastings MS • Doane University • Scottsbluff HS • CCC Columbus • GICC
For more information or applications, log on to Mike Trader's website at www.traderscamp.com
Call: 402.960.8011
mtradercamps@outlook.com

DECLARATION OF DEALS

STK #6T26 '26 CHRYSLER PACIFICA SELECT AWD
SURROUND VIEW CAMERA, REMOTE START, POWER LIFTGATE
SALE PRICE **\$48,500**

STK #6T22 '26 DODGE DURANGO GT AWD
5.7L HEMI, CLASS IV HITCH, TRAILER BRAKE CONTROL
WITH APPROVED FINANCING **0%** A.P.R. FOR 36 MONTHS

STK #6T14 '26 JEEP COMPASS LATITUDE 4X4
FOOT ACTIVATED LIFTGATE, ALTITUDE SPECIAL EDITION, POWER SEAT
SALE PRICE **\$35,945**

Prices Good Through June 1, 2026 • NO DOC FEES!
JONNY DODGE Chrysler-Jeep, Inc. Salesman: Andy Beyer

AUCTIONS & REAL ESTATE
CONTINUE ON PAGE 5

COLLECTIBLES AND HOUSEHOLD COLLECTIBLES AUCTION
TUESDAY, MAY 19, 2026 • 4:00 PM
4534 28TH ST, COLUMBUS NE

AUCTIONEERS NOTE: A unique auction with many advertising pieces from the Columbus Area (NIB) Some Coins, License plates, glassware, Many Tools, Keyring and Pens Collection, Toys.



Grubaugh Auction Service
Rick Grubaugh • 402-276-1210 • www.rgauctions.net

WEST POINT LIVESTOCK AUCTION

Thursday May 7 Weekly /ACF
Monday May 18 Must See ACF

Thursday - 10:00 a.m. Fat Cattle /Weigh Cows/Bulls 12:30 Feeder /Bred Cows /PRs

Market Report: April 30, 2026

We had a short run of fats for our Thursday April 30th auction, but did find good activity, sending those top fats out at 254.00. We followed with a good run of weigh cows and bulls, finding that market to be fully steady from past weeks. We will be back on May 18th with a Must-See calf and yearling special, expecting 2500 head. If you want to move any stock, please give us a call and we would be happy to stop out and visit with you about our upcoming specials.

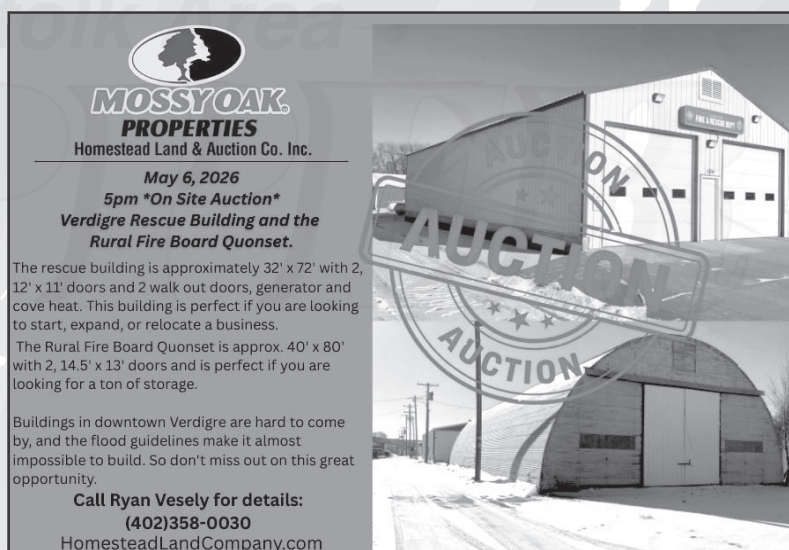
Weigh cows / Finish Cattle	199 HD
Drug Free	No Test
Top Fats	250-254
Choice /Select	240-250
2-way Cattle	250-260
Hol /Jer /LH	No Test
Top Cows	195-230
Bulk	160-195
Low Yield	50-160
Bulls	170-240.50
Young Feeding Cows	200-250

OFFICE 402-372-2493 • www.westpointlivestock.com
Brian Brester (Mg): 402-750-5821



PO Box 528
1200 East Highway 50, Yankton, SD
Office : 605-665-9641 • Fax: 605-665-9644
www.stockmenslivestock.com

SALE SCHEDULE	FIELD REPS
Weigh Up Cows / Bull Sale Every Monday 8:30 am	Greg Ryken (Owner)605-661-1451 Dan Koupal605-491-1331 Duane Haberman605-661-4282
Fed Cattle Tuesday 7:30 am Followed by Weigh-Ups	Ed Sage402-640-8420 Brian Bjerkas605-661-5083
Feeder Cattle Wednesday 8:00 am Followed by Weigh-Ups	Mark Herbolzheimer402-649-9061 Doug Johnson402-394-1484
Bred Cows & Pairs Friday 11:00 am (During Season)	Jerry Stoebner605-661-2404 Steve Welch712-898-6519
Special Feeder Sale As Announced	Dr. Tony Sees (Veterinarian)605-760-9149



MOSSYOAK PROPERTIES
Homestead Land & Auction Co. Inc.
May 6, 2026
5pm *On Site Auction*
Verdigre Rescue Building and the Rural Fire Board Quonset.


The rescue building is approximately 32' x 72' with 2, 12' x 11' doors and 2 walk out doors, generator and cove heat. This building is perfect if you are looking to start, expand, or relocate a business.

The Rural Fire Board Quonset is approx. 40' x 80' with 2, 14.5' x 13' doors and is perfect if you are looking for a ton of storage.

Buildings in downtown Verdigre are hard to come by, and the flood guidelines make it almost impossible to build. So don't miss out on this great opportunity.

Call Ryan Vesely for details:
(402)358-0030
HomesteadLandCompany.com

FOR SALE!



1 Bedroom Plus Loft for 4 Beds

2017 Quailridge Park Model Camper
Located at **SHADY CEDAR CAMPGROUND**
2.5 miles north of Bonesteel, SD on SD Hwy 1860
FOR SERIOUS INQUIRIES CALL: 402-340-4950

MEREDITH "PUNK" AND ENID WORTH ESTATE RANCH EQUIPMENT AUCTION

Friday, May 15, 2026 ~ Start Time 10:00 a.m.

90071 422nd Ave., Springview, NE

32 Miles East of Valentine, NE via Hwy 12, or 18 Miles West of Springview, NE via Hwy 12. Roads will be marked.

AUCTIONEERS NOTE: Punk and Enid were wonderful stewards of their ranch, and were excellent care takers! The equipment and everything that was in use has had very good care, serviced when needed it, and mostly shedded. All equipment is field ready. Lot's of good usable items for anyone and everyone in the ranching industry! Once in a lifetime auction for this nice family! Equipment should sell at approximately 2:00 p.m.



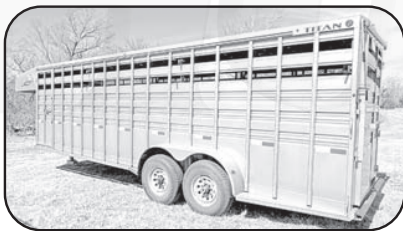
HAYING/FEEDING EQUIPMENT

- 2021 JD Baler 560M, 1000 PTO, 5,090 Bales, SN# 1E056MDLMM477149
- 2020 New Holland Swather, Speedrower 160 - 559 hrs., 3,887 acres, SN# HAJSR160CLG679539 w/16' header
- 2009 Haybuster 2650, Tub Grinder/Bale Processor SN#26DJ093850
- 2006 Vermeer R2300 Twin Basket Hydraulic Rake, SN# 1VR3201B361000584
- 1990 Rowse 300 Box Scraper, SN# V-3-8
- 1985 Great Plains Drill, 15' w/ Yetter Markers, 3 point hitch conversion dolly to a pull type, 7.5" row spacing, 108,216 Acres, SN #GP-4043C
- 1982 JD 700 Grinder Mixer, Newly Painted, w/2 Screens SN# E0700000457N
- Rowse Hydraulic Dump Rake, 36'
- Lehman 30' Stackmover
- JD mower w/single 9' bar
- Kosch double 7' mower
- Antique dump rake
- Bale unroller
- (2) Bale forks (front & back)
- John Deere CoverEdge Net Wrap 67" x 9000' 14 rolls



TRACTORS/EQUIPMENT

- 2001 JD 7510 w/740 Loader, 8,829 hrs, SN# RWSG060059422
- Duals for JD 7510
- 1980 JD 4440, 7,495 hrs, SN#4440P 041608R
- Duals for JD 4440
- 1970 JD 3020 w/JD 148 Loader w/Newer Bucket, 8,000 hrs, SN#T111R135455R
- 1955 JD 60 SN# 6043151 - w/Farmhand Loader, sweep head
- 1951 JD A, Late Styled Row-Crop, SN#667832
- 1949 Allis Chalmers WD SN# WD12431
- 1941 H Farmall, SN#86694
- Toyota Forklift, 3,874 hrs, SN# 403FG25-22180
- JD field cultivator w/harrow on back
- International 14' disc (red), w/new tires
- JD off-set 12' disc
- JD Van Brunt Model B Grain Drill, 12', no till
- 16' Spring tooth harrow
- (6) Parasal Manufacturing Feed Bunks, 20'
- JD 18' harrow • Calf sled
- Palpation Cage w/Pearson head gate
- Weed Sprayer, goes in the back of Ranger/Side x Side
- Master Manufacturing Portable 4-Wheeler Sprayer
- Ag Chemical Sprayer, 300 gal, 3 pt, w/spray pump
- Spray boom • Brush Chief Rotary Mower, SN# 0030756
- Schwartz 150 bunk feeder wagon • Parker gravity wagon w/hydraulics on back door
- 8' Pick-up box trailer, new box & tires, and new w/tag DeeZee toolbox • JD 88 Blade, 9'
- HW Brand Portable Panels w/homemade trailer • Common Sense Manufacturing Wire Roller



PICKUPS/TRUCK/TRAILERS

- 2005 Ford F-150 Pickup (red), w/Bradford Built Flatbed, RanchHand Grill, quad doors, 4x4, 176,800 mi., VIN#1FTRF14555NB41805
- 2005 Ford F-150 Pickup (silver) fifth wheel ball in 8' box, quad doors, 4x4, 139,100 mi., 1FTRF14515NB29053
- 2002 Ford F-250 Lariat Super Duty Pick-Up (beige), fifth wheel ball, 4x4, gas, 4 door, Triton V10, RanchHand grill, leather interior, tonneau cover, 6' box, 160,000 mi., 1FTN-W21S22EC02148
- 1989 GMC 7000 Straight Truck (old red fire truck), 11,974 mi., 5 spd, 1GDL7D1E3KV508832
- 2017 Titan Gooseneck Stock Trailer (tan), 24', Hoof Grip Floor, 4TGG24205H1077628
- 2017 Utility trailer w/ramp, bumper hitch, 6'x12', 4YMBU1212HMO16307
- Rowse drive-over drill trailer
- 2012 Titan Bumper Hitch Flatbed Trailer, 20', Drive-over fenders, Pull out ramps. VIN 4TGF20208C1062022
- 2002 Titan gooseneck beavertail flatbed 24', 4TGF3130121021375
- Hay rails for Titan gooseneck flatbed
- 1981 S&S Trailer (white), 20', gooseneck, open top
- 1969 Premier stock trailer, 16', rubber floor, bumper hitch



MISC.

- 3 point, 1 sided plow • Cultivator tool bar • 2 Older Cultivators
- Underground pivot wire (1 twisted/1 copper) • 8' Autogate • Frame for cattle rubs
- Barrel stand • Antique tractor scale w/ramps & two monitors • 100 Gallon used oil tank, full
- Used batteries • Misc., HW Brand Galvanized tanks • (2) Bulk oil tanks, 110 gallon capacity
- Bridge planks • Random well pipe • Carport frame • Damaged 10' stock tank
- Windbreak steel • Misc. panels & gates, some Daniels Mfg, some continuous fence
- Lots of used hog panels • Misc. steel posts, used • New & used rolls of wire
- Used cable • Cement covers, w/lids (used, chipped) • Swine handling crate
- 2013 John Deere X300 Lawn Mower Tractor • 1994 John Deere LX178 Lawn Mower Tractor
- Push Lawn Mower • Small Cement Mixer (older) • Homemade sheep wagon
- Large Cement Mixer (like new) • Homemade Dog House, insulated, w/homemade kennel
- (2) Heider gravity wagons (older) • Tractor chains • WD tractor for parts
- JD wheel suitcase weights, different sizes • Wheel weights for Allis Chalmers • JD sweep
- Dodge Ram wheel covers • 500 Gallon Fuel tank w/250 gallon of #2 diesel • Portable gas tank
- Homemade salt/mineral boxes • 3 Pressed board storage cabinets • Branding stove



SHOP TOOLS

- Generac GP15000E portable generator • Air compressor • Sandblaster
- Homemade steel work bench w/ vice and wheels
- (1) Oxygen tank & (1) Acetylene tank on wheeled cart • Oxygen/Acetylene tank cart
- 100 Gal. Propane tank • Montezuma tool box • Homemade Tool Box for flatbed
- Lincoln AC225 Arc Welder • Genesis 16 speed drill press • Jet table grinder
- DeWalt chop saw • 2 ton cherry picker • Floor jack - red • Hitachi miter saw
- Performax table saw • Misc. Ladders • Portable shop lights • 'A' Frame for chain hoist

POWER TOOLS & HAND TOOLS GALORE!

FEATURED ITEMS

- 2022 Electric Scooter, JYD LUX72 Model, barely used.
- 2022 Harmar AL100 Universal Scooter Lift
- UHF 40 Watt Repeater, 4 Handhelds w/chargers, & tower antenna
- GUN** • 223 Remington 700 ADL Rifle w/Scope

CONSIGNMENTS

- M&W PTO Dynamometer, P2000 - Don Graham (402) 760-0173
- Sioux Steel Drying Grain Bin - 7,000 bu - Lorraine
- Sioux Steel Grain Bin - 5,000 bu - Lorraine
- Sioux Steel Bulk Feed Bin w/hopper bottom - Lorraine
- Hipke Welding Calf Cradle - Lorraine
- 1975 Ford F700 Straight Truck, 52,374 mi., 400 cubic inch gas engine, 5 spd trans., w/ brownie 4 spd auxiliary trans., re-framed, tandem rear axles, w/differential lockers - Derric Krueger (402) 389-1630



ATTENTION IRON BUYERS!!! *LOTS OF SALVAGE IRON*****

Lorraine (402) 497-3471 • Mitch (402) 984-2651

VIEW MORE PICTURES ONLINE AT WORTHAUCTION.COM

Ranch-Land Auction Service

Mike Baxter, Auctioneer • Ainsworth, NE - (402) 394-5686

Guest Auctioneer, Randy Steinke - Colome, SD

Terms: Cash or Sufficient Funds Checks. Proper I.D. or Driver's License Required When Registering For A Bidder Number

Sales Tax Collected • Retail Purchasers Must Bring State I.D. Number
Not Responsible For Accidents • No Guarantees or Warranties are Implied • All Items Sold As-Is - All Sales Final

Items to be removed within 30 days or becomes property of the Worth family.

ALL Statements Made Day of Sale Take Precedence Over Any Printed Material



National ⁺ Nurses Week

May 6-12 ⁺ ⁺

*Thank You to
Area Nurses for
Your Hard Work*

Celebrating
Our Community's
Nurses

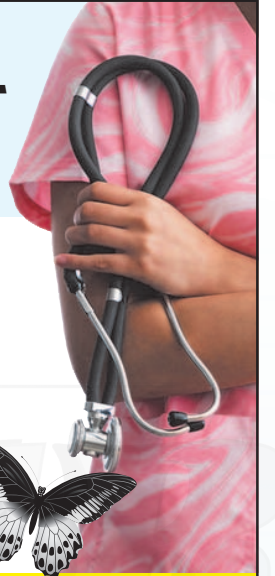


Accura
HEALTHCARE
of Neligh

1100 T. Street, Neligh, NE
402-887-5428

A SHOUT-OUT TO NURSES

For their
knowledge,
skill, training,
hard work,
commitments and
compassion.
We salute our
nurses!



CLARKSON
Community Care Center
212 Sunrise Drive, Clarkson, NE
402-892-3494



Thanks
to the dedicated
NURSES
who make our community
a better place!

MIDTOWN
HEALTH CENTER

Norfolk - Madison - West Point
402-371-8000
Midtownhealthne.org



Thanks, Nurses!

NUCOR[®]



NUCOR STEEL NEBRASKA
NUCOR COLD FINISH NEBRASKA
NUCOR DETAILING CENTER
VULCRAFT NEBRASKA



THANK YOU

NURSES WEEK



West Holt

Medical Services

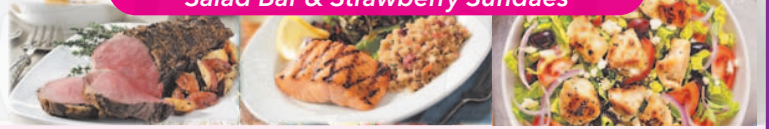


Mother's Day

MENU

- Roast Beef
- Swiss Steak
- Chicken Francese
- Salmon Tuscany
- Shrimp Skewers
- Broasted Chicken

Served with Mash Potatoes, Vegetables, Salad Bar & Strawberry Sundaes



86420 Highway 81 • Randolph, NE
(402) 337-0196
22 Miles Straight North of Norfolk
www.jerryhilltop.com

Gift Cards To Make Mom's Day!

Buy a **\$50** Gift Card
Get a **\$10** Gift Card
FREE

All the Month Of May.

Gift Cards Available. Any Denomination

2101 West Pasewalk Ave., Norfolk, NE • 402.371.3068



Mother's Day SPECIALS

Just Arrived!

2026 E-Z-GO ELITE
(Lithium 8-year warranty)
Electric Golf Car

Large Selection of Colors
Trade-ins Welcome



Lithium Conversion Kits Available | Trojan Lead Acid Batteries in Stock

Like us on Facebook



MR. Golf Car Inc.
605-369-2625
Springfield, SD

Call or Stop In!!
Hours: Mon-Fri 8am - 5pm | Sat. 9am - Noon
822 8th Street, Springfield, SD
605-369-2625 - www.mrgolfcar.net



Come Check Out Our

MOTHER'S day
Specials

REGISTER FOR \$50 IN PLANTS

Like & Share Daily Posts On Facebook For A Chance To Win Daily Giveaways!

Great Selection Of Perennials, Annuals,
Hanging Baskets, Planters & Succulents

J&H PRODUCE/GREENHOUSE

86229 531 Ave - Located 5 Miles West of Plainview, 1 3/4 Miles South
• Open Daily 7:00 a.m. - Dusk

402-841-9522

Don't Forget Mom!!

She deserves to be treated like a queen!

Come Check Out

Our Huge selection of Hanging Basket,
Planters, Perennials, and more!

Nebraska Grown Plants for Nebraska Gardens

Norfolk's
Shamrock
Garden Center
Norfolk Location:
Next to Goodwill
(402) 992-0260

Shamrock
NURSERY
49368 East US
Highway 20
O'Neill, NE
402-336-3323

Neligh's
Shamrock
Garden Center
215 South M St.,
Neligh, NE
402-929-2012



PICTURE PERFECT, NOW
WAIT UNTIL YOU TASTE IT



OMAHA STEAKS
SINCE 1917

Butcher's Classic Pack (SAVE 60%)
4 Butcher's Cut Filet Mignons (5 oz.)
4 Air-Chilled Boneless Chicken Breasts (5 oz.)
4 PureGround® Filet Mignon Burgers (6 oz.)
4 Gourmet Jumbo Franks (3 oz.)
4 Individual Scalloped Potatoes (3.8 oz.)
4 Caramel Apple Tartlets (4 oz.)
1 Omaha Steaks Seasoning (3 oz.)
8 FREE Omaha Steaks Burgers (4 oz.)

81081XEL separately 6929-993
SPECIAL INTRODUCTORY PRICE \$129.99

OmahaSteaks.com/ClassicPack7399 | 1.833.897.4133
Ask for your FREE burgers with offer 81081XEL

Savings shown over aggregated single item base price. Photos exemplary of product advertised. 8 free 4 oz. burgers will be sent to each shipping address that includes 81081. Limit 2. Standard S&H added per address. While supplies last. Items may be substituted due to inventory limitations. Some products may not be available for sale in your area. Sales are subject to OmahaSteaks.com/terms-of-use. Expires 12/31/26. 25M9931 | Omaha Steaks, LLC

MISCELLANEOUS

Peace of mind & early detection Now more than ever, it's important to get screened for Stroke & Cardiovascular Disease risk. Life Line Screening is simple & painless. 833-970-4172

MISCELLANEOUS

Portable Oxygen Concentrator May Be Covered by Medicare! Reclaim independence and mobility with the compact design and long-lasting battery of Inogen One. Free information kit! Call 877-305-1535

MISCELLANEOUS

Professional lawn service: Fertilization, weed control, seeding, aeration & mosquito control. Free quote. Ask about first application special! 833-860-0811

MISCELLANEOUS

Water damage cleanup & restoration: A small amount of water can lead to major damage and mold growth in your home. Our trusted professionals do complete repairs to protect your family and your home's value! Call 24/7: 1-833-887-0117. Have zip code of service location ready when you call!

Wesley Financial Group, LLC Timeshare Cancellation Experts Over \$50,000,000 in timeshare debt & fees cancelled in 2019. Get free info package & learn how to get rid of your timeshare! Free consultations. Over 450 positive reviews. 833-308-1971

NATIONAL NETWORK

AUDIEN HEARING. The world's first hearing aid with touchscreen controls. No tiny buttons, apps or prescriptions. 45-day risk free trial. Free shipping. Lifetime support. More than 1.5 million happy customers. Call Audien 1-866-698-3418 (mcn)

CASH PAID FOR HIGH-END MEN'S SPORT WATCHES! Rolex, Breitling, Omega, Patek Philippe, Heuer, Daytona, GMT, Submariner and Speedmaster. Call 1-833-641-6646. (mcn)

DENTAL INSURANCE from Physicians Mutual Insurance Company. Coverage for 350 plus procedures. Real dental insurance- NOT just a discount plan. Do not wait! Call now! Get your FREE Dental Information Kit with all the details! 1-855-973-9175 www.dental50plus.com/https://www.dental50plus.com/midwest #6258 (mcn)

DIRECTV- All your entertainment. Nothing on your roof! Sign up for Direct and get your first free months of Max, Paramount+, Showtime, Starz, MGM+ and Cinemax included. Choice package \$84.99/mo. Some restrictions apply. Call DIRECTV 1-866-296-1409. (mcn)

Donate your car, truck, boat, RV and more to support our veterans! Schedule a FAST, FREE vehicle pickup and receive a top tax deduction! Call Veteran Car Donations at 1-888-429-2331 today! (mcn)

Don't Pay For Covered Home Repairs Again! Our home warranty covers ALL MAJOR SYSTEMS AND APPLIANCES. We stand by our service and if we can't fix it, we'll replace it! Pick the plan that fits your budget! Call: 1-833-816-2128. (mcn)

Call To Get On Our SPRING 2026 List Now!

"WE'VE GOT YOU COVERED"

H&H ROOFING
ROOFING | SIDING | GUTTERS
LICENSED • BONDED • INSURED
(402) 992.8133
FAMILY OWNED & OPERATED
602 1/2 W. BENJAMIN AVE., NORFOLK, NE

Replace your roof w/the best looking & longest lasting material steel from Erie Metal Roofs! 3 styles & multiple colors available. Guaranteed to last a lifetime! Limited Time Offer up to 50% off install + Additional 10% off install (military, health & 1st responders.) 1-833-370-1234

NATIONAL NETWORK

AFFORDABLE TV & INTERNET. If you are overpaying for your service, call now for a free quote and see how much you can save! 1-866-472-7954. (mcn)

ATTENTION OXYGEN THERAPY USERS! Discover Oxygen Therapy That Moves with You with Inogen Portable Oxygen Concentrators. FREE information kit. Call 1-833-650-5916. (mcn)

TOP DOLLAR PAID for old vintage guitars! Gibson, Fender, Martin, Greco, Rickenbacker, Epiphone, Etc. 1930's to 1980's. Call 866-433-8277

The Norfolk Area
SHOPPER
Star Carrier



May 6th, 2026
ETHAN NIEMANN
Thanks for all that you do!

STOP

Ask about our Nursing School Loan Repayment Up to \$30,000

Overnight RN / LPN
Full or Part Time | 6p - 6a
mileage assistance, no mandating, BCBS under \$158/month, shift and weekend differentials, same day pay, license reimbursement, and paid CEUs

Heritage
of BEL-AIR

1203 N 13th St. Norfolk
402-371-4991
ktso@vhsmail.com
www.heritagebelair.com

NOW HIRING

Continued on Page 11

NOW HIRING
Office Assistant

Work Schedule & Perks:

- Monday-Friday, 8:00 AM - 4:00 PM
- Competitive wages
- Paid bi-weekly, 6 paid holidays, PTO & bonuses
- Simple IRA contributions & Aflac opportunities

Key Responsibilities:

- Answer incoming phone calls and take feed orders
- Weigh corn trucks
- Maintain records for hog groups
- Manage Accounts Receivable and Accounts Payable for the meds and clearing accounts

SERIOUS INQUIRES CONTACT KEVIN @ 402-986-1136

J&H Milling Inc.
242 3rd Road
Howells, NE 68641

HELP WANTED

Looking for a **Company Tanker Driver** to run a dedicated route.

- Gross over \$2,000/wk

Call Kevin: 402-649-8647
or Mark: 402-649-2646

SIGNOR Trucking

First in food.

MICHAEL FOODS INC. BENEFITS ADVANCEMENT GREAT PAY

Feed Mill Tech/ CDL Driver

- Home Every Night (Local Route)
- Set Schedule
- Great Benefits!

Looking for a Feed Mill Tech/Class A CDL Driver to haul feed to local Michael Foods Farms.

APPLY TODAY!
WWW.MICHAELFOODS.COM

Are you looking for a company that provides you stability and support for long term career growth? Provides excellent benefits? Recognizes employees?

Come See for Yourself At:
Michael Foods
105 N Main Street * Wakefield, NE
402.287.5000

EOE: M/F/V/D

INTEREST FREE FINANCING AVAILABLE

Nebraska

Appliance Center

**HOURS: Mon.-Sat.: 9 am - 6 pm
Sunday: 12 pm - 5 pm**

BEDDING

*** UP TO
70% OFF**

Select mattress sets

*** FREE DELIVERY
Set up & Removal of
Old on all Mattress Sets
Over \$599.00**

MATTRESS SPECIALS



QUEEN SIZE MATTRESS SET \$288⁸⁸
QUEEN SIZE MATTRESS ONLY \$569⁶³
13" Thick Super Pillowtop NATIONAL BRAND
COMPARE AT OVER \$1800.00

QUEEN SIZE MATTRESS SET \$799⁰⁰
VALUED AT \$999.00

KING SIZE MATTRESS SET \$999⁰⁰
VALUED AT \$1999.00

Twin Size MATTRESS ONLY \$99⁰⁰
Limited Quantities



18 Cu. Ft. Top Freezer Refrigerator
MRT1853AAW

\$599⁰⁰



26 Cu. Ft. Stainless French Door Refrigerator
MRF2716BST

\$1199⁰⁰

Speed Queen
 April 27 - May 31
UPGRADE YOUR DRYER. ELEVATE YOUR LAUNDRY.

\$100 Rebate White DR7

\$150 Rebate Matte Black DR7

RECEIVE UP TO \$150 REBATE WHEN YOU PURCHASE A QUALIFYING SPEED QUEEN® DR7 DRYER BETWEEN APRIL 27 - MAY 31.

ELIGIBLE MODELS

- DR7004WE
- DR7004WG
- DR7004BE
- DR7004BG

Substitutions are not eligible.

VISIT [SPEEDQUEENPROMOTIONS.COM](https://speedqueen.com/products/rebates/) TO RECEIVE YOUR SPEED QUEEN® PREPAID MASTERCARD®

*Rebate available with the purchase of select Speed Queen dryers between April 27, 2026 and May 31, 2026 ("rebate period") from an authorized Speed Queen retailer. All rebate claims for the above time period must be submitted no later than July 1, 2026. Late submissions will not be accepted. Any submissions that require correction or further information must be completed by August 31, 2026. Only one eligible machine is permitted. Limit one rebate per household. Rebate must be redeemed for residential use only.

Visit <https://speedqueen.com/products/rebates/> to submit a claim. AR26-0013 Speed Queen by Alliance Laundry Systems



LAUNDRY PAIRS starting at:

\$999

YOUR CHOICE



SAVE \$500
On Copper Queen Mattress Set

SAVE \$750
On Copper King Mattress Set



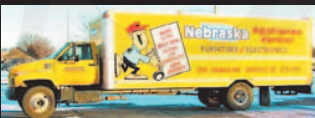
Clearance prices on all SOFAS IN STOCK

\$50 OFF
ANY RECLINER

\$100 OFF
ANY ELECTRIC RECLINER

\$200 OFF
ANY LIFT RECLINER

**DELIVERY 7 DAYS A WEEK
EVEN NIGHTS & WEEKENDS**



Locally Owned & Operated For Over 50 Years. We Have Our Own In-store Service Department.

Love Freedom? Thank a Vet

If You Ate Today Thank a Farmer



Voted Best of Northeast Nebraska Appliance & Mattress for 2019!

LIKE US ON FACEBOOK

CHECK US OUT ONLINE

www.mynebraskaappliance.com

1201 West Omaha Ave., Norfolk. 402-379-1220



HOURS
 Mon.-Sat. 9 am - 6 pm
 Sunday: 12 pm - 5 pm

NO INTEREST IF PAID IN FULL IN 12 MONTHS. \$3.99.00 Minimum Purchase Required. Minimum Payments required* 30.49% APR if the promotional balance is not paid in full by the end of the promotional period or, to the extent permitted by law, if you make a late payment, interest will be imposed from the date of purchase at the APR noted above. This APR is as of 7/4/2017 and will vary with the market based on the Prime Rate. Your card agreement, the terms of the offer and applicable law govern this transaction including increasing APRs and fees and terminating the promotional period.

HUSKER AG IS CURRENTLY SEEKING APPLICATIONS FOR

FULL TIME PLANT OPERATOR POSITION

• EXCELLENT BENEFITS PKG. • TRAINING PROVIDED

Benefits include: Paid vacation & holidays, 401(k) retirement plan, quarterly profit sharing, health insurance, long-term and short-term disability, group life insurance, dental & vision insurance and flex spending account for dependent care

If interested please submit a resume to or complete an application at:



Husker Ag, LLC
54048 Hwy 20, Plainview, NE 68769
(402) 582-4446
or send a resume to
meganb@huskerag.com

JOIN
OUR STAFF
And Bring A Difference
To Someone's Life

CNA

All Shifts | Full & Part Time

Park View Haven
Nursing Home
309 North Madison,
Coleridge, NE
402-283-4224



NOW HIRING!
MAINTENANCE
TECHNICIAN

\$3,000 New Hire Incentive!
JOB TRAINING PROVIDED!
PAID TIME OFF - INSURANCE
RETIREMENT PLANS

IF YOU ARE INTERESTED IN JOINING OUR
TEAM AT THE ATKINSON ETHANOL PLANT

STOP IN AND APPLY IN PERSON
at 87590 Hillcrest Rd, Atkinson
ask for an application
or send a resume to
meganb@huskerag.com

Sandhills Renewable Energy, LLC

Norfolk Veterans Home is
seeking a highly motivated

Supply Manager

Full Time

Must have procurement experience.
Monday-Friday

For Job Details And To Apply,
visit <https://veterans.nebraska.gov/employment-ndva>

NORFOLK VETERANS' HOME
"CARING FOR AMERICA'S HEROES"
600 E. BENJAMIN AVENUE NORFOLK, NE.
402-370-3141

EOE/AA/V

**WE ARE
HIRING**

**PLANT OPERATOR
LOGISTICS TECHNICIAN**

\$3,000 New Hire Incentive!
PAID TIME OFF - INSURANCE - RETIREMENT PLANS

IF YOU ARE INTERESTED IN JOINING OUR
TEAM AT THE ATKINSON ETHANOL PLANT

STOP IN AND APPLY IN PERSON
at 87590 Hillcrest Rd, Atkinson
ask for an application
or send a resume to
meganb@huskerag.com

Sandhills Renewable Energy, LLC

NOW HIRING

Business Office Clerk Full Time	Clinic Nurse (LPN or RN) Full or Part Time
Plebotomist / Medical Laboratory Technologist Full Time	
Paramedic Full or Part Time	Physician Full Time
Retail Pharmacy Clerk Full or Part Time	Staff Nurse (RN, LPN or CNA) Full or Part Time

Antelope Memorial Hospital
102 W 9th St., Neligh, NE
402-887-4151
This institution is an equal opportunity provider and employer

CARRIERS NEEDED
Check Out Our HIRE-ON BONUS TODAY!

A-57: Southwest Norfolk Area: 700-800 Blks 18th St, 18th Cir, & 20th St. 1800-1900 Blk Vicki Lane, 1800-2100 Blks Parker Circle. Mostly Apartment Deliveries On This Route.

C-28: Central Norfolk Area: 100-200 Blk N 7th, 100-300 Blk N 8th, N 9th, 900 Blk Norfolk Ave, 700-900 Blk Korningstein, 700-900 Blk Nebraska.

C-35: Northeast Norfolk Area: 100-200 Blk Cedar, Elm, Walnut, Maple, Spruce, Sycamore, Georgia, 600-900 Blk N 2nd, 600-1100 Blk N 1st.

C-41: Northwest Norfolk Area: 2300-2400 Blks Maple Ave, 600 Blk Summit St, 400-500 Blk Williams St, 2200-2400 Blks Hardison Dr, 600 Blk Charles St, Woodwind Apts, 2100-2300 Blks Prospect Ave, 2200 Blk Random Rd, 2200-2400 Blks W. Norfolk Ave, 100-600 Blks N. 25th Street, 100-300 Blks Valley View Dr.

C-66: Northeast Norfolk Area: 800-1000 Blks of Nord, Eastridge, E Knolls, N. Victory Rd, 1300 Blk E Cedar, Sunrise Dr, 1400-1500 Blks E Sycamore, 1300-1500 Blks E Maple.

D-41: Central Norfolk Area: 1000 Blk of N 6th & N 7th St, 700-1000 Blks of N 8th St, 800-1000 Blks Queen City Blvd, 600-700 Blks Maple, Spruce & Georgia Ave.

D-42: Central Norfolk Area: 1100-1200 Blks Wilson Ave, Grant Ave, Sq Turn Blvd., Colwell, N 9th St, N 11th St, 900-1200 Blks Georgia & E. Benjamin Ave.

D-49: North Norfolk: 1600-1800 Blk Skyline, 1700-1800 Blk Imperial Rd, 1500 Blk N 19th, 900-1000 Blk N 18th.

D-50: Northwest Norfolk Area: 2200-2300 Blks BelAir Rd, 2200-2300 Blks Skyline, Shorthorn, Campbell, Lodgeview, & Bel Ridge.

Give us a call or stop by the Norfolk Area Shopper for more information.
We'd love to make you part of our NAS team!

THE NORFOLK AREA SHOPPER 402-379-4100
406 W Norfolk Ave.

WISNER CARE CENTER
Continuing a Legacy of Quality Care
VA Certified Nursing Home

If you are looking for a great paying job in a caring environment apply and be a part of our team!

NOW HIRING for the following position

RN/LPN
Part Time - PRN
Evening / Overnights

Apply by calling (402) 529-3286
or apply online at Indeed.com

Owned & operated by the City of Wisner
Wisner Care Center • 1105 9th St., Wisner, NE 68791



BRADLEY ROOF CO.

REPAIR & RESTORATION

Jon Moser 605-661-9324

[MOSER.CO@HOTMAIL.COM](mailto:moser.co@hotmail.com)



Free Estimates



Repair/Restoration



Non-Binding Consults



Asphalt/Rubber/Steel



A Division of Moser Construction